



2014 Competition Statistics Discovery Grants (DG) and Research Tools and Instruments (RTI) Programs

This report includes tables and figures that provide summary information on the 2014 Discovery Grants and Research Tool and Instruments Competitions. More detailed statistics are also included in this document.

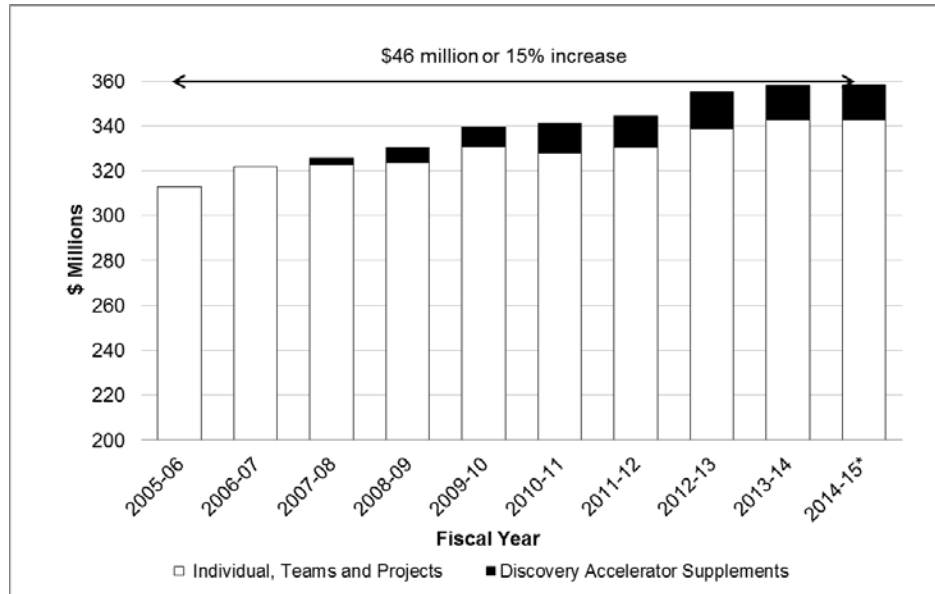
SECTION 1 – FISCAL YEAR STATISTICS	3
<i>Figure 1 Expenditures in the Discovery Grants Program Elements, 2005-06 to 2014-15*</i>	<i>3</i>
<i>Figure 2 Number of Grants Funded through Individual and Team Discovery Grants (including those in Subatomic Physics) and Subatomic Physics Projects, 2005-06 to 2014-15*</i>	<i>3</i>
<i>Figure 3 Average Grant for Individual and Team Discovery Grants (including those in Subatomic Physics) and Subatomic Physics Projects, 2005-06 to 2014-15*</i>	<i>4</i>
SECTION 2 – COMPETITION STATISTICS	5
<i>Table 1 Overall Comparative Statistics 2014 Discovery Grants Competition¹</i>	<i>5</i>
<i>Figure 4 Distribution of Grant Levels to Successful Applicants, 2014 Competition</i>	<i>6</i>
<i>Figure 5 Change in Grant Level, 2014 Competition</i>	<i>6</i>
<i>Figure 6 Percentage Change in Grant Level for Established Researchers Renewing a Grant, 2014 Competition</i>	<i>7</i>
<i>Figure 7 Success Rate¹ by Category of Individual Applicants, Competition Years 2005-2014</i>	<i>7</i>
<i>Table 2 Number of Applications and Awards by Category of Applicants, 2005-14</i>	<i>8</i>
<i>Table 3 Discovery Grants¹ Competition Results by University, 2014 Competition</i>	<i>9</i>
<i>Table 4 Statistics by University Size, 2014 Competition</i>	<i>10</i>
<i>Table 5 Success Rate by Category of Applicants and University Size, 2010-14</i>	<i>10</i>
<i>Figure 8 Distribution of Applications¹ by Quality Bin</i>	<i>11</i>
<i>Table 6 Number of applications¹ by Quality Bins by University Size, 2014 Competition</i>	<i>11</i>
<i>Figure 9 Percentage of Occurrences of Various Combinations of Ratings¹ in Bin K by University Size</i>	<i>12</i>
SECTION 3 – STATISTICS BY EVALUATION GROUP	13
<i>Table 7 Success Rate, Average Grant and Total Amount Awarded by Category of Applicant for Each Evaluation Group, 2014 Competition</i>	<i>13</i>
<i>Figure 10 Distribution of the Fraction of Applications by Quality Bin for Each Evaluation Group, 2014 Competition</i>	<i>15</i>
SECTION 4 – STATISTICS BY GENDER	21
<i>Table 8 Proportion of Applicants by Gender and Career Stage, 2011-14 Competitions</i>	<i>21</i>

<i>Figure 11</i>	<i>Discovery Grant Success Rate and Average Awarded Amount by Career Stage and Gender, 2011-14 Competitions</i>	<i>22</i>
<i>Figure 12</i>	<i>Discovery Grant Success Rate and Average Grant by Applicant Status and Gender, 2011-14 Competitions.....</i>	<i>22</i>
<i>Figure 13</i>	<i>Discovery Grant Success Rate by Gender and Evaluation Group, 2011-14 Competitions .</i>	<i>23</i>
SECTION 5 – RESEARCH TOOLS AND INSTRUMENTS.....		24
<i>Table 9</i>	<i>Overall Comparative Statistics, 2012-2014 Research Tools and Instruments Competitions</i>	<i>24</i>

SECTION 1 – FISCAL YEAR STATISTICS

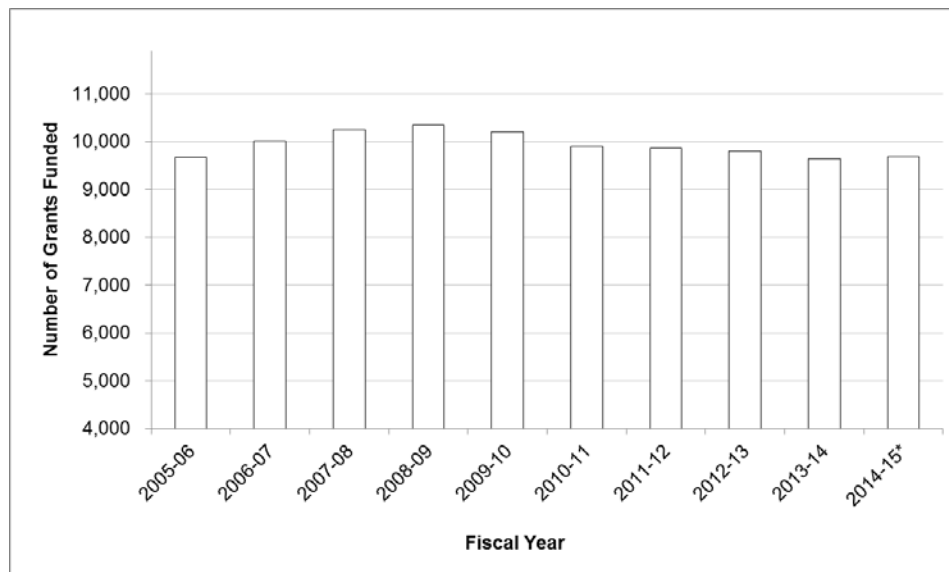
This section presents data on a fiscal year basis and is inclusive of ongoing installments.

Figure 1 Expenditures in the Discovery Grants Program Elements, 2005-06 to 2014-15*



*Projected Expenditures for 2014-15

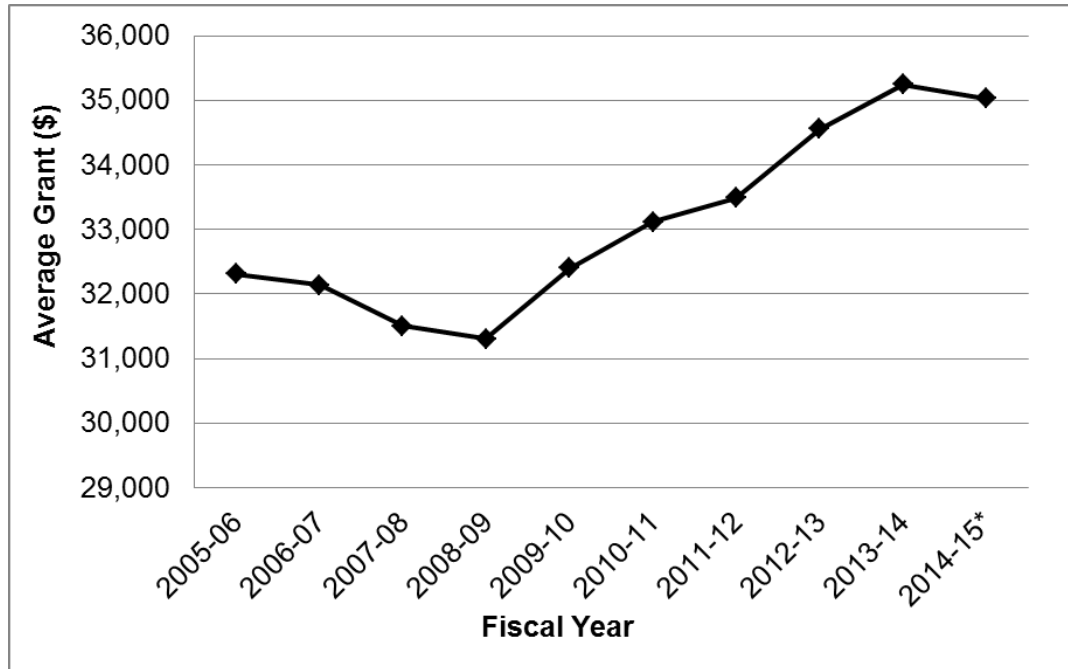
Figure 2 Number of Grants Funded through Individual and Team Discovery Grants (including those in Subatomic Physics) and Subatomic Physics Projects, 2005-06 to 2014-15*



*Projected Numbers of Grants for 2014-15

Figure 3

Average Grant for Individual and Team Discovery Grants (including those in Subatomic Physics) and Subatomic Physics Projects, 2005-06 to 2014-15*



*Projected Average for 2014-15

SECTION 2 – COMPETITION STATISTICS

The total awarded amount for the 2014 DG competition was \$68.3 million. The number of DG applications in 2014 was 3,190. Going into the competition, there were 1,668 renewal applicants who held grants of, on average, \$34,450; after the competition, there are 2,031 funded researchers, at an average grant level of \$33,612.

NSERC continued to put a strong emphasis on giving early career researchers (ECR) a chance to demonstrate their potential and exceeded the minimum target success rate of 50 percent recommended in the [International Review](#) of the DG Program. In *Budget 2011*, NSERC was allocated additional funding "to support outstanding research in the natural sciences and engineering fields, such as the Strategy for Partnerships and Innovation (SPI)." NSERC is devoting half of this money to enhance the DGs of ECRs in the form of supplements to their grants. These supplements, of a value of up to \$5,000 per year, are included in the awarded amount and reflected in the following statistics.

Table 1 Overall Comparative Statistics 2014 Discovery Grants Competition¹

Data¹	Success Rate	Average Grant (\$)
Early Career Researchers (ECR)	66%	\$26,999
Established Researchers (ER)		
Renewing their grant (ER-R)	80%	\$36,550
Not Holding a Grant ² (ER-NHG)	37%	\$28,463

1. Includes Discovery and Subatomic Physics (Individual and Team) Grants, but excludes the Subatomic Physics Projects. It cannot therefore be compared with data presented in Figure 3.

2. Includes returning established unfunded applicants and experienced researchers submitting a first application

Figure 4 Distribution of Grant Levels to Successful Applicants, 2014 Competition

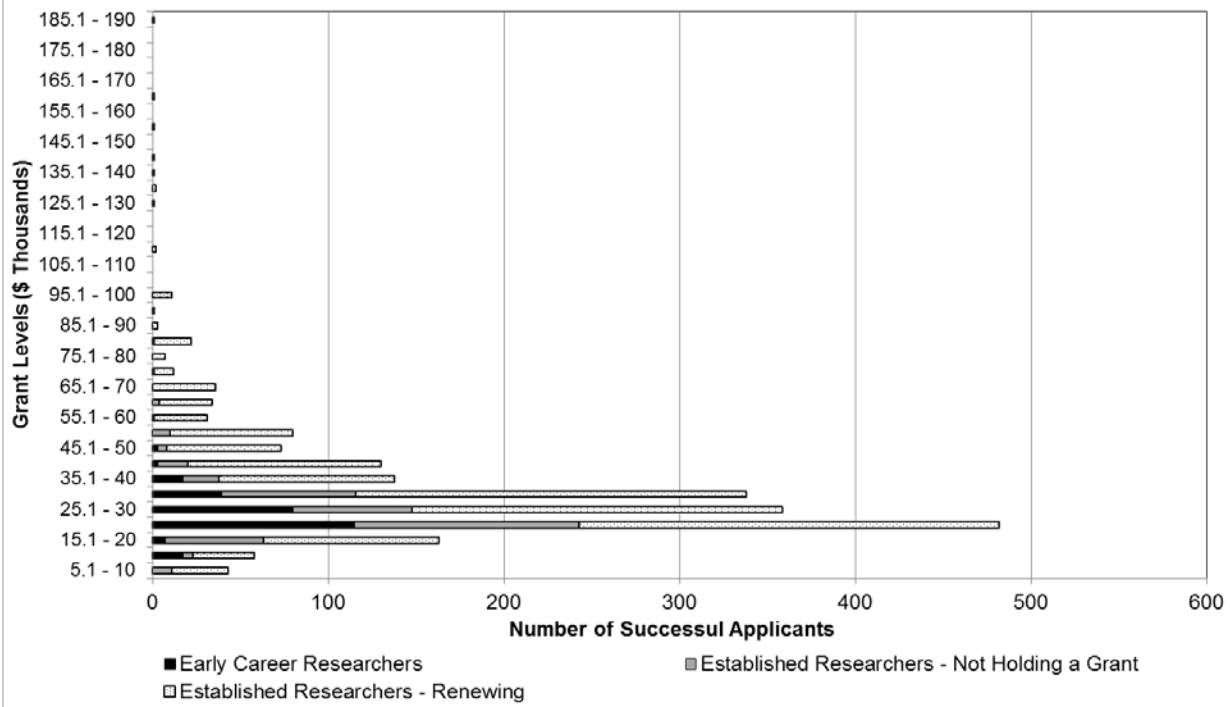


Figure 5 Change in Grant Level, 2014 Competition

a) All Established Researchers

b) Established Researchers – First Renewal

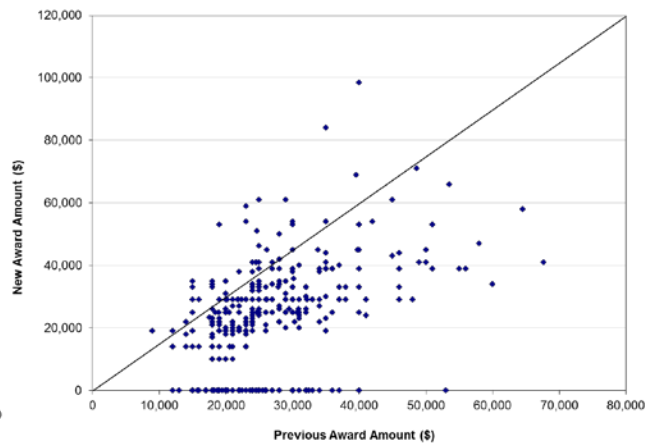
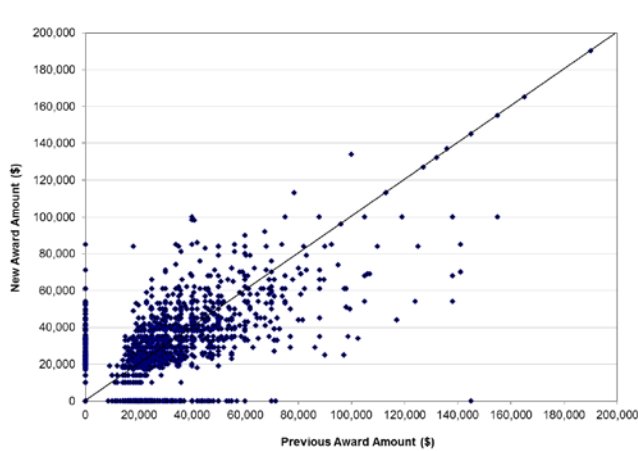


Figure 6 Percentage Change in Grant Level for Established Researchers Renewing a Grant, 2014 Competition

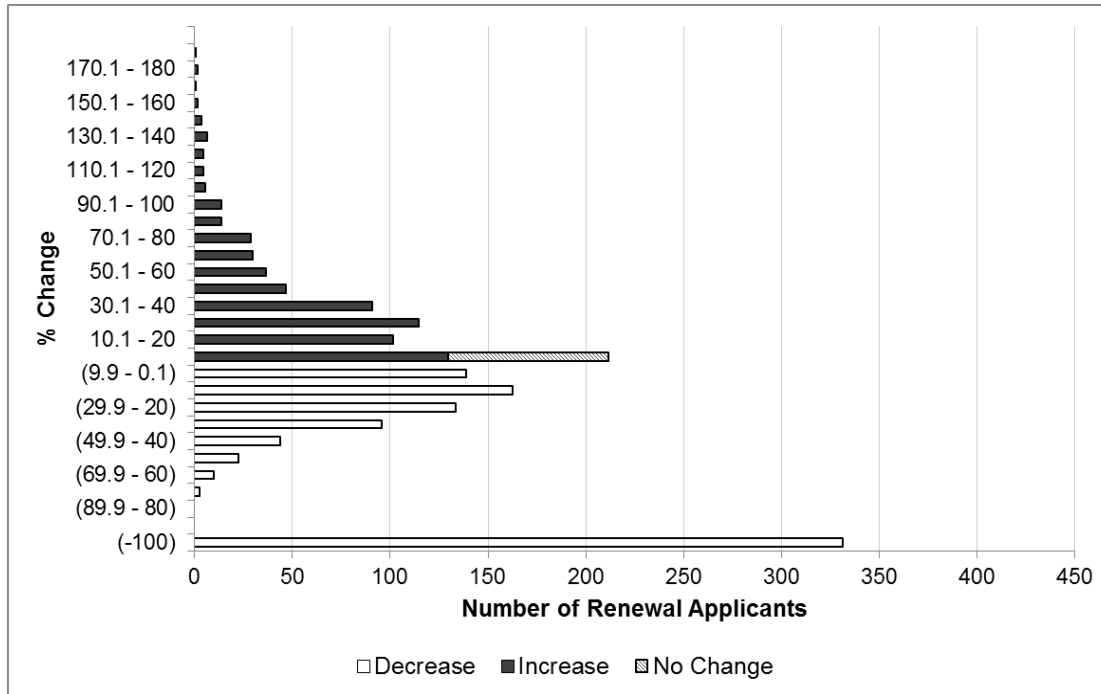
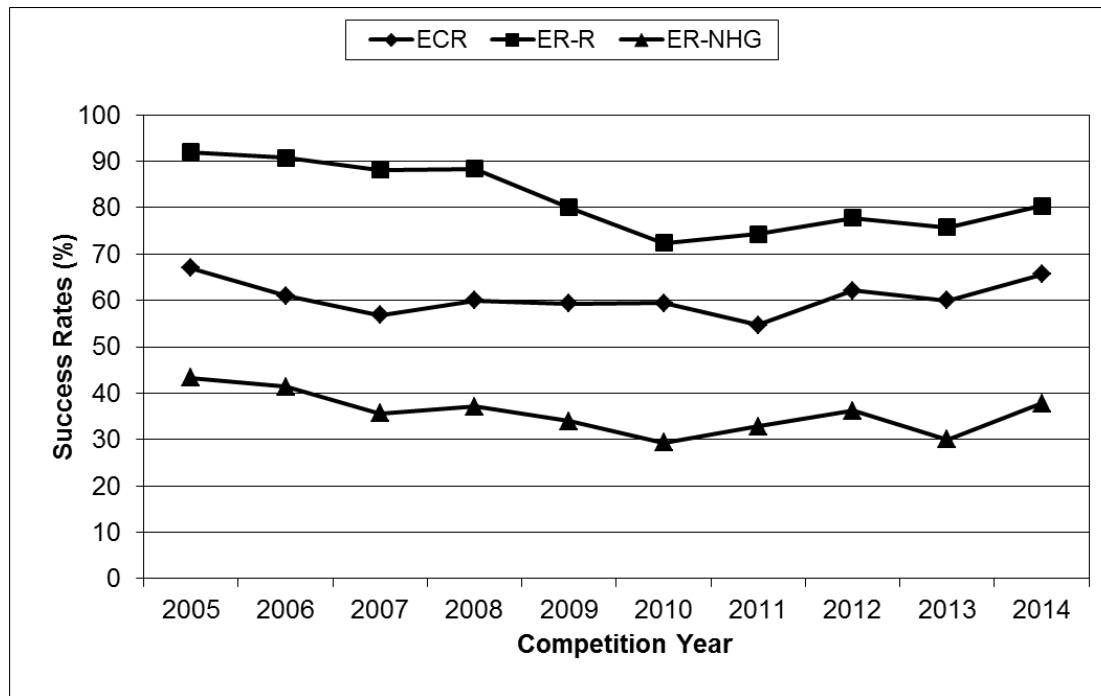


Figure 7 Success Rate¹ by Category of Individual Applicants, Competition Years 2005-2014



¹ Only includes Discovery Grant Individual

Table 2 Number of Applications and Awards by Category of Applicants, 2005-14

Competition Year	Number of Applications¹				Number of Awards¹			
	<i>ECR</i>	<i>ER-R</i>	<i>ER- NHG</i>	<i>Total</i>	<i>ECR</i>	<i>ER-R</i>	<i>ER- NHG</i>	<i>Total</i>
2005	683	1,731	713	3,127	457	1,592	309	2,358
2006	672	1,805	703	3,180	410	1,638	291	2,339
2007	768	2,053	699	3,520	436	1,810	249	2,495
2008	710	1,944	680	3,334	426	1,718	252	2,396
2009	503	1,850	819	3,172	298	1,481	278	2,057
2010	513	1,864	902	3,279	305	1,348	264	1,917
2011	457	1,835	1,137	3,429	250	1,363	373	1,986
2012	480	1,848	1,102	3,430	298	1,438	399	2,135
2013	474	1,853	1,128	3,455	284	1,404	338	2,026
2014	427	1,647	1,060	3,134	280	1,324	401	2,005

¹ Only includes Discovery Grant Individual

Table 3 Discovery Grants¹ Competition Results by University, 2014 Competition

Universities	Early Career Researchers			Established Researchers - Renewing			Established Researchers - Not Holding a Grant		
	Success Rate (%)	Total Awarded (\$)	Average Grant (\$)	Success Rate (%)	Total Awarded (\$)	Average Grant (\$)	Success Rate (%)	Total Awarded (\$)	Average Grant (\$)
Acadia University	N/A	N/A	N/A	*	*	*	20%	27,000	27,000
Algoma University	N/A	N/A	N/A	N/A	N/A	N/A	*	*	*
Athabasca University	N/A	N/A	N/A	*	*	*	0%	0	*
Bishop's University	N/A	N/A	N/A	*	*	*	*	*	*
Brandon University	*	*	*	N/A	N/A	N/A	*	*	*
British Columbia Institute of Technology	N/A	N/A	N/A	*	*	*	*	*	*
Brock University	N/A	N/A	N/A	82%	216,000	24,000	20%	59,000	29,500
Cape Breton University	*	*	*	*	*	*	*	*	*
Carleton University	88%	177,000	25,286	78%	1,087,096	43,484	47%	364,000	26,000
Centre de recherche informatique de Montréal	N/A	N/A	N/A	N/A	N/A	N/A	*	*	*
Concordia University	*	*	*	75%	859,000	35,792	68%	321,000	24,692
Dalhousie University	69%	242,000	26,889	77%	998,500	36,981	29%	197,000	28,143
École de technologie supérieure	67%	143,900	23,983	65%	307,000	27,909	50%	179,000	22,375
École Polytechnique de Montréal	82%	244,000	27,111	93%	901,500	32,196	36%	84,000	21,000
Grant MacEwan University	60%	54,000	18,000	N/A	N/A	N/A	*	*	*
HEC Montréal	N/A	N/A	N/A	83%	134,000	26,800	*	*	*
Institut national de la recherche scientifique	*	*	*	91%	806,000	40,300	*	*	*
Lakehead University	57%	87,000	21,750	56%	117,000	23,400	21%	64,000	21,333
Laurentian University	N/A	N/A	N/A	40%	61,000	30,500	14%	63,000	31,500
McGill University	63%	478,000	28,118	86%	2,731,000	36,905	43%	653,736	32,687
McMaster University	60%	153,000	25,500	90%	1,997,000	36,309	40%	403,000	33,583
Memorial University of Newfoundland	50%	135,000	22,500	74%	474,000	27,882	39%	367,000	28,231
Mount Allison University	N/A	N/A	N/A	80%	132,000	33,000	60%	87,000	29,000
Mount Royal University	*	*	*	*	*	*	N/A	N/A	N/A
Mount Saint Vincent University	N/A	N/A	N/A	N/A	N/A	N/A	*	*	*
Nipissing University	*	*	*	*	*	*	*	*	*
Queen's University	60%	67,172	22,391	81%	1,646,000	38,279	44%	217,000	31,000
Redeemer University College	N/A	N/A	N/A	N/A	N/A	N/A	*	*	*
Royal Military College of Canada	*	*	*	71%	137,000	27,400	0%	0	*
Royal Roads University	N/A	N/A	N/A	*	*	*	N/A	N/A	N/A
Ryerson University	17%	22,000	22,000	66%	567,000	27,000	30%	161,000	23,000
Saint Mary's University	*	*	*	71%	107,052	21,410	14%	33,000	33,000
Simon Fraser University	83%	146,000	29,200	97%	1,992,000	34,947	54%	382,000	27,286
St. Francis Xavier University	N/A	N/A	N/A	63%	169,300	33,860	33%	45,000	22,500
Télé-université	*	*	*	*	*	*	N/A	N/A	N/A
The King's University College (Edmonton)	*	*	*	N/A	N/A	N/A	N/A	N/A	N/A
The University of British Columbia	73%	474,000	29,625	85%	3,645,380	37,973	44%	554,100	27,705
The University of Western Ontario	73%	357,800	32,527	86%	1,638,348	32,767	47%	712,738	29,697
The University of Winnipeg	*	*	*	*	*	*	22%	49,000	24,500
Thompson Rivers University	*	*	*	*	*	*	38%	74,000	24,667
Trent University	N/A	N/A	N/A	*	*	*	33%	39,000	39,000
Trinity Western University	*	*	*	N/A	N/A	N/A	*	*	*
TRIUMF	N/A	N/A	N/A	*	*	*	*	*	*
Université de Moncton	*	*	*	43%	93,000	31,000	11%	19,000	19,000
Université de Montréal	69%	343,000	31,182	90%	2,112,000	40,615	42%	342,000	34,200
Université de Sherbrooke	60%	156,000	26,000	73%	1,290,300	44,493	33%	154,000	25,667
Université du Québec à Chicoutimi	*	*	*	100%	111,000	22,200	40%	43,000	21,500
Université du Québec à Montréal	60%	73,000	24,333	93%	491,000	35,071	36%	105,000	26,250
Université du Québec à Rimouski	*	*	*	83%	183,000	36,600	*	*	*
Université du Québec à Trois-Rivières	*	*	*	50%	146,000	29,200	33%	75,000	25,000
Université du Québec en Abitibi-Témiscamingue	*	*	*	*	*	*	*	*	*
Université du Québec en Outaouais	*	*	*	*	*	*	*	*	*
Université Laval	74%	437,000	31,214	71%	1,284,000	37,765	32%	388,000	25,867
University of Alberta	74%	523,000	26,150	81%	3,145,600	37,448	54%	545,000	25,952
University of Calgary	75%	333,900	27,825	81%	2,074,000	37,036	39%	506,919	26,680
University of Guelph	100%	312,000	28,364	84%	1,104,000	35,613	42%	414,000	27,600
University of Lethbridge	*	*	*	75%	237,000	39,500	45%	152,000	30,400
University of Manitoba	44%	210,000	26,250	72%	985,000	31,774	38%	395,000	30,385
University of New Brunswick	*	*	*	53%	248,000	27,556	21%	107,000	26,750
University of Northern British Columbia	N/A	N/A	N/A	60%	80,000	26,667	*	*	*
University of Ontario Institute of Technology	75%	137,500	22,917	40%	149,000	24,833	31%	95,000	19,000
University of Ottawa	53%	212,000	26,500	78%	1,837,500	39,946	41%	343,950	28,663
University of Prince Edward Island	*	*	*	*	*	*	13%	54,000	54,000
University of Regina	20%	27,000	27,000	62%	164,000	20,500	8%	25,000	25,000
University of Saskatchewan	57%	227,000	28,375	74%	1,119,807	36,123	27%	293,000	32,556
University of the Fraser Valley	*	*	*	N/A	N/A	N/A	N/A	N/A	N/A
University of Toronto	75%	476,000	26,444	84%	5,453,884	44,704	51%	1,164,386	33,268
University of Victoria	*	*	*	83%	1,466,000	41,886	44%	195,000	27,857
University of Waterloo	80%	468,000	23,400	87%	2,945,000	36,358	50%	379,000	31,583
University of Windsor	*	*	*	71%	439,000	29,267	32%	169,000	28,167
Vancouver Island University	N/A	N/A	N/A	N/A	N/A	N/A	*	*	*
Wilfrid Laurier University	*	*	*	80%	119,000	29,750	56%	124,000	24,800
York University	80%	203,000	25,375	81%	646,400	29,382	20%	103,000	25,750
Grand Total	66%	7,586,708	26,999	80%	49,123,367	36,550	37%	11,555,829	28,463

¹Includes Discovery and Subatomic Physics Individuals and Team Grants but, excludes Subatomic Physics Projects

* Less than five applications

Table 4 Statistics by University Size, 2014 Competition

Category of Applicants	Data	University Size		
		Large	Medium	Small
Early Career Researchers	Success Rate	70%	62%	48%
	Total Amount	\$5,961,872	\$913,900	\$710,936
	Average Grant	\$27,730	\$24,700	\$24,515
Established Researchers - Renewing	Success Rate	83%	74%	63%
	Total Amount	\$40,366,819	\$5,924,496	\$2,832,052
	Average Grant	\$38,010	\$33,284	\$27,231
Established Researchers - Not Holding a Grant	Success Rate	42%	37%	23%
	Total Amount	\$8,323,829	\$1,941,000	\$1,291,000
	Average Grant	\$29,517	\$26,230	\$25,820

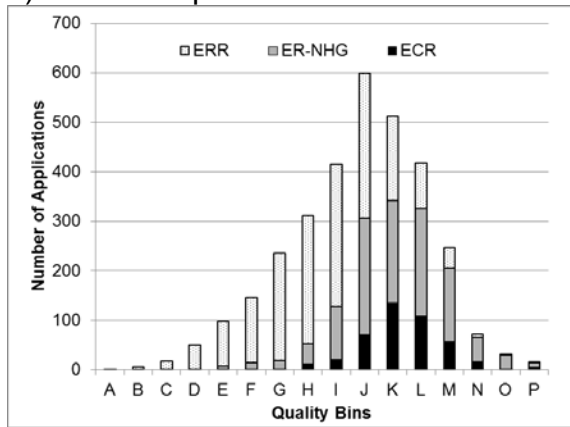
Table 5 Success Rate by Category of Applicants and University Size, 2010-14

	Large					Medium					Small				
	2010	2011	2012	2013	2014	2010	2011	2012	2013	2014	2010	2011	2012	2013	2014
Early Career Researchers	61%	59%	66%	64%	70%	57%	57%	64%	58%	62%	42%	34%	48%	43%	48%
Established Researchers - Renewing	76%	78%	81%	80%	83%	69%	52%	72%	69%	74%	65%	55%	63%	57%	63%
Established Researchers - Not Holding a Grant	35%	38%	42%	34%	42%	36%	36%	33%	24%	37%	18%	19%	19%	21%	23%

As a result of peer review, applications are placed in 16 “quality bins” based on their merit against the three selection criteria using a [six point scale](#) – Excellence of Researcher (EoR), Merit of Proposal (MoP), and Contribution to the Training of High Quality Personnel (HQP). Figure 8 shows the distribution of applications for Early Career Researchers (ECR), Established Researchers Renewing their grant (ER-R), and Established Researchers Not Holding a Grant (ER-NHG) at the time of application between 2009 and 2013, and the same distribution for the 2014 competition. Budget permitting, NSERC aims to support Established Researchers to Bin J (which corresponds to ratings of Strong on three criteria or equivalent) and ECR to Bin K or Bin L.

Figure 8 Distribution of Applications¹ by Quality Bin

a) 2014 Competition



¹ Does not include results for Subatomic Physics

b) 2009-2013 Competitions

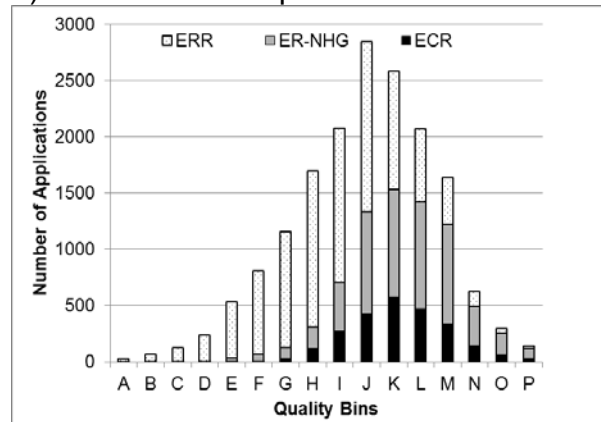


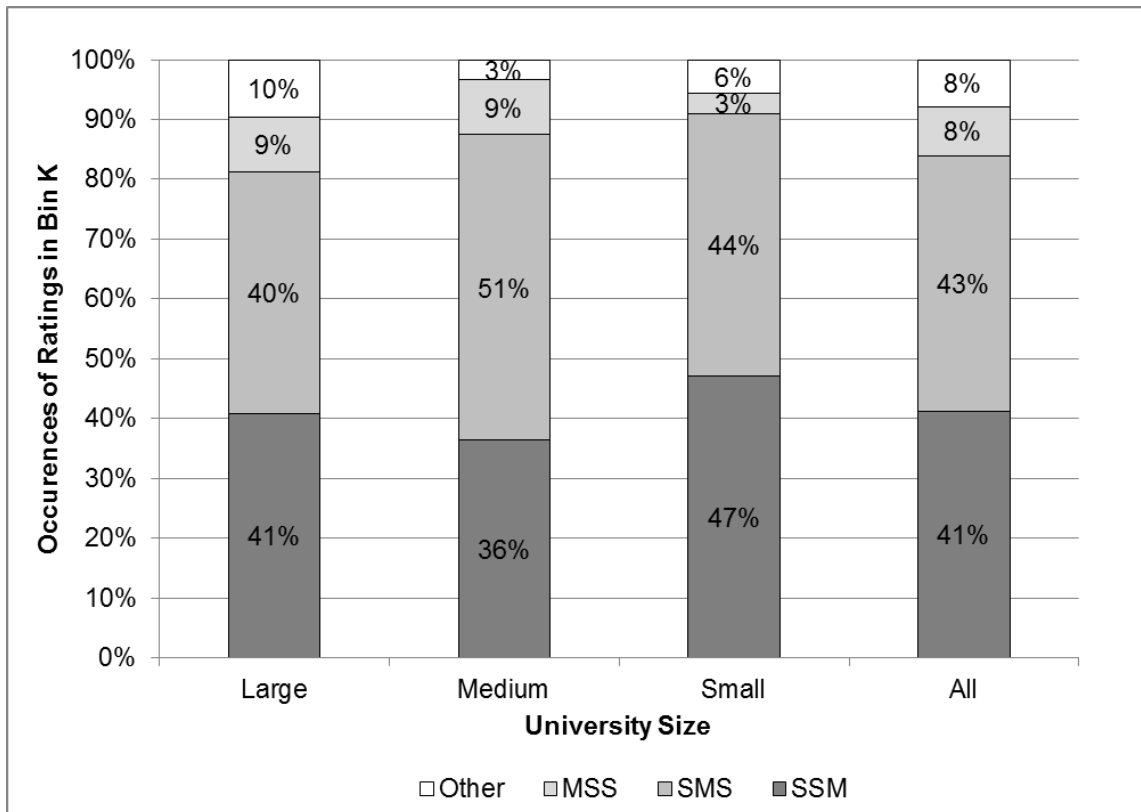
Table 6 Number of applications¹ by Quality Bins by University Size, 2014 Competition

Bin	University Size					
	Large		Medium		Small	
	Number	Percentage	Number	Percentage	Number	Percentage
A	1	0.0%		0.0%		0.0%
B	5	0.2%	1	0.2%		0.0%
C	16	0.7%	1	0.2%		0.0%
D	44	2.0%	5	1.0%	1	0.2%
E	86	3.8%	8	1.6%	3	0.7%
F	123	5.5%	16	3.2%	6	1.4%
G	198	8.9%	28	5.7%	10	2.3%
H	245	11.0%	47	9.5%	19	4.3%
I	317	14.2%	55	11.1%	43	9.8%
J	419	18.7%	99	20.0%	81	18.4%
K	335	15.0%	88	17.8%	89	20.2%
L	248	11.1%	86	17.4%	84	19.0%
M	140	6.3%	40	8.1%	66	15.0%
N	38	1.7%	13	2.6%	22	5.0%
O	18	0.8%	3	0.6%	11	2.5%
P	4	0.2%	5	1.0%	6	1.4%
Total	2237	100.0%	495	100.0%	441	100.0%

¹ Does not include results from Subatomic Physics

The rating pattern of applications in Bin K, which usually is the first bin not funded for Established Researchers is presented in Figure 9. Bin K generally corresponds to receiving two ratings of Strong and one Moderate. Other combinations – such as a Very Strong, a Strong, and an Insufficient; or two ratings of Moderate and a Very Strong – make up the rest of the cases.

Figure 9 Percentage of Occurrences of Various Combinations of Ratings¹ in Bin K by University Size



¹MSS: Moderate for EoR, Strong for MoP, Strong for HQP
 SMS: Strong for EoR, Moderate for MoP, Strong for HQP
 SSM: Strong for EoR, Strong for MoP, Moderate for HQP

SECTION 3 – STATISTICS BY EVALUATION GROUP

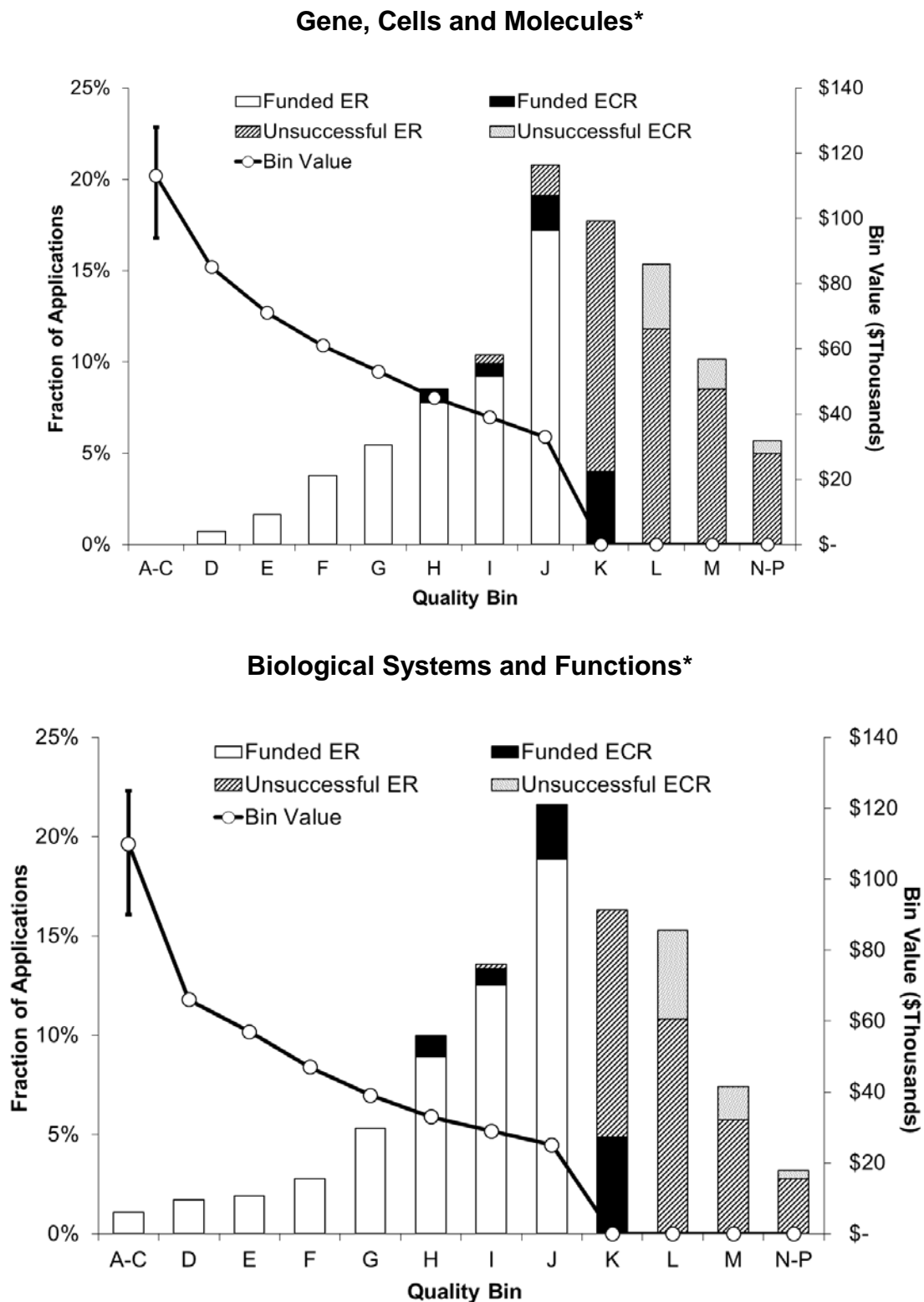
Table 7 Success Rate, Average Grant and Total Amount Awarded by Category of Applicant for Each Evaluation Group, 2014 Competition

1501 - Genes, Cells and Molecules	Early Career Researchers	Established Researchers	
		Renewing	Not Holding a Grant
Success Rate	55%	69%	39%
Average Grant	\$37,527	\$44,601	\$39,409
Total Amount Awarded	\$1,163,336	\$5,218,271	\$3,034,469
1502 - Biological Systems and Functions	Early Career Researchers	Established Researchers	
		Renewing	Not Holding a Grant
Success Rate	59%	84%	41%
Average Grant	\$30,733	\$36,767	\$27,579
Total Amount Awarded	\$1,383,000	\$6,324,000	\$2,151,124
1503 - Evolution and Ecology	Early Career Researchers	Established Researchers	
		Renewing	Not Holding a Grant
Success Rate	52%	79%	52%
Average Grant	\$26,563	\$37,592	\$25,875
Total Amount Awarded	\$425,000	\$3,571,196	\$828,000
1504 - Chemistry	Early Career Researchers	Established Researchers	
		Renewing	Not Holding a Grant
Success Rate	58%	87%	18%
Average Grant	\$34,273	\$61,359	\$35,667
Total Amount Awarded	\$377,000	\$6,074,500	\$428,000
1505 - Physics*	Early Career Researchers	Established Researchers	
		Renewing	Not Holding a Grant
Success Rate	67%	94%	45%
Average Grant	\$25,500	\$44,747	\$28,043
Total Amount Awarded	\$357,000	\$5,190,600	\$645,000
*Includes Subatomic Physics Discovery Individual and Group, but not Projects			
1506 - Geosciences	Early Career Researchers	Established Researchers	
		Renewing	Not Holding a Grant
Success Rate	69%	71%	32%
Average Grant	\$27,750	\$40,697	\$34,821
Total Amount Awarded	\$666,000	\$3,622,000	\$975,000
1507 - Computer Science	Early Career Researchers	Established Researchers	
		Renewing	Not Holding a Grant
Success Rate	69%	74%	23%
Average Grant	\$25,072	\$36,835	\$25,594
Total Amount Awarded	\$626,800	\$4,236,000	\$409,500

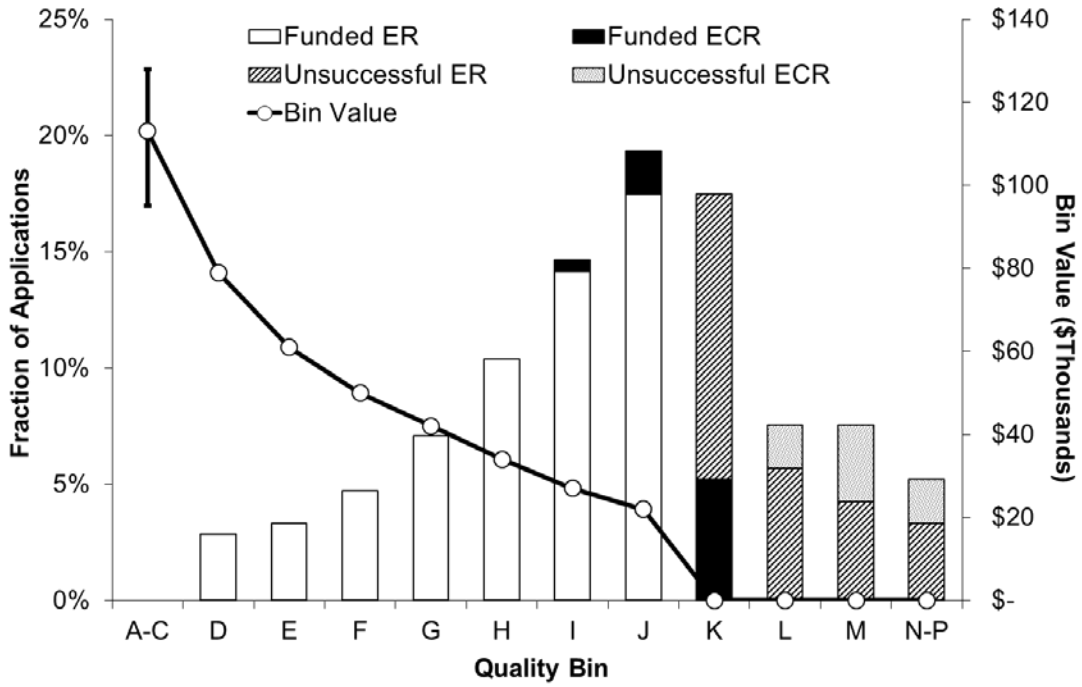
1508 - Mathematics and Statistics	Early Career Researchers	Established Researchers	
		Renewing	Not Holding a Grant
Success Rate	61%	86%	42%
Average Grant	\$14,579	\$18,354	\$15,989
Total Amount Awarded	\$277,000	\$2,698,000	\$399,736
1509 - Civil, industrial and Systems Engineering	Early Career Researchers	Established Researchers	
		Renewing	Not Holding a Grant
Success Rate	80%	81%	44%
Average Grant	\$22,549	\$25,644	\$21,250
Total Amount Awarded	\$721,572	\$3,026,000	\$850,000
1510 - Electrical and Computer Engineering	Early Career Researchers	Established Researchers	
		Renewing	Not Holding a Grant
Success Rate	93%	81%	33%
Average Grant	\$25,000	\$35,183	\$24,741
Total Amount Awarded	\$650,000	\$3,835,000	\$668,000
1511 - Materials and Chemical Engineering	Early Career Researchers	Established Researchers	
		Renewing	Not Holding a Grant
Success Rate	59%	80%	41%
Average Grant	\$25,353	\$32,959	\$24,042
Total Amount Awarded	\$431,000	\$2,834,500	\$577,000
1512 - Mechanical Engineering	Early Career Researchers	Established Researchers	
		Renewing	Not Holding a Grant
Success Rate	81%	74%	36%
Average Grant	\$24,238	\$30,781	\$24,583
Total Amount Awarded	\$509,000	\$2,493,300	\$590,000

The distribution of applications by quality bins is presented in Figure 9 for each Evaluation Group (EG). The bin value illustrated represents the value of the bin for the normal cost of research for Establish Researchers (ER). For EGs marked with a star (*), a differential for the cost of research was used and, as a result, individual grant values within a bin may be lower or higher than indicated.

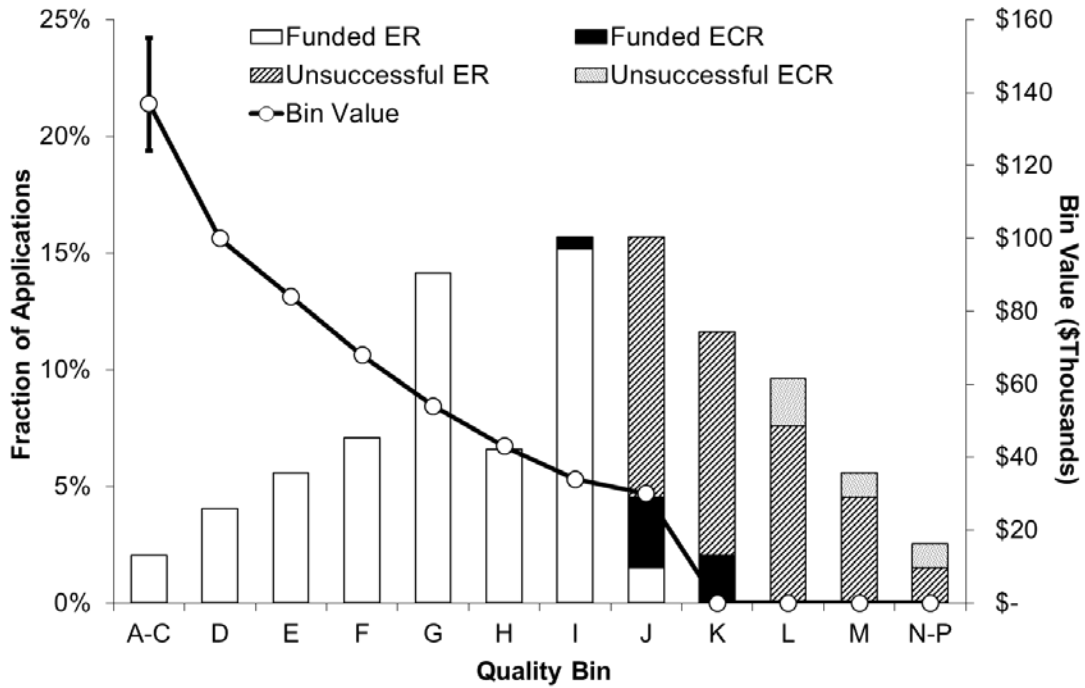
Figure 10 Distribution of the Fraction of Applications by Quality Bin for Each Evaluation Group, 2014 Competition



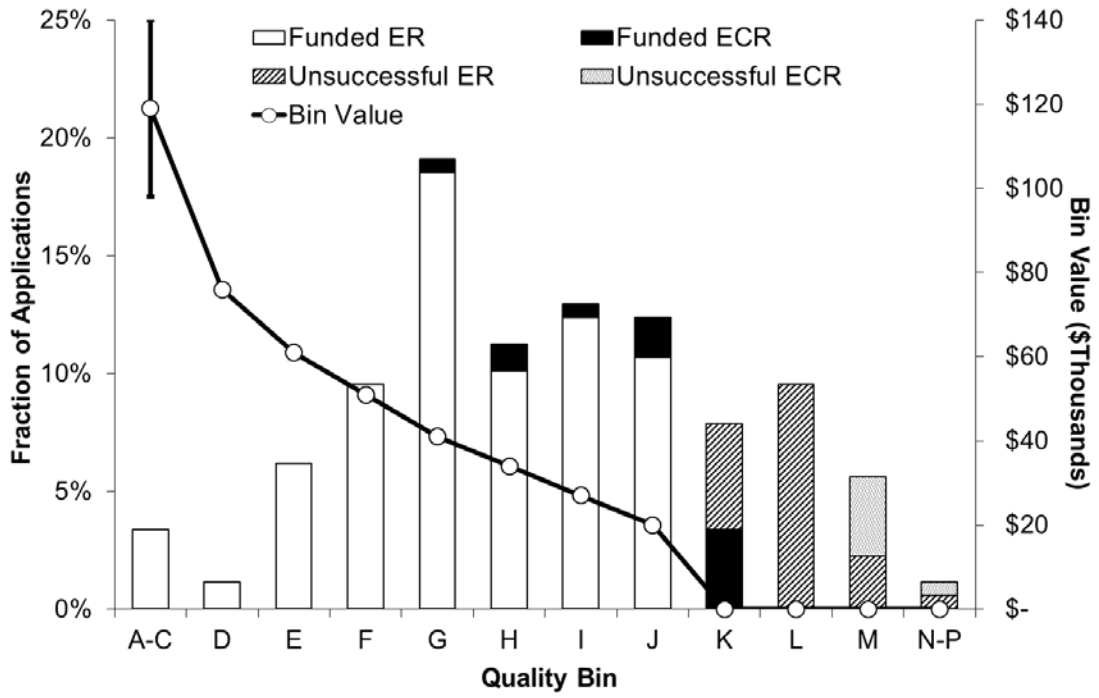
Evolution and Ecology*



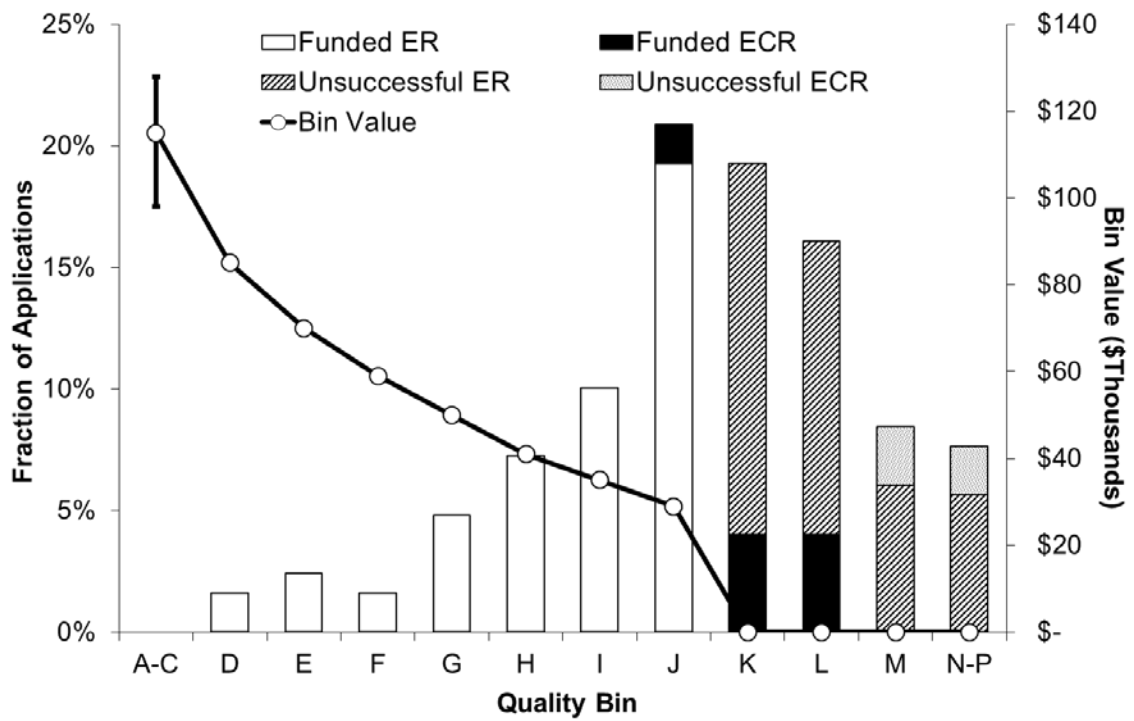
Chemistry



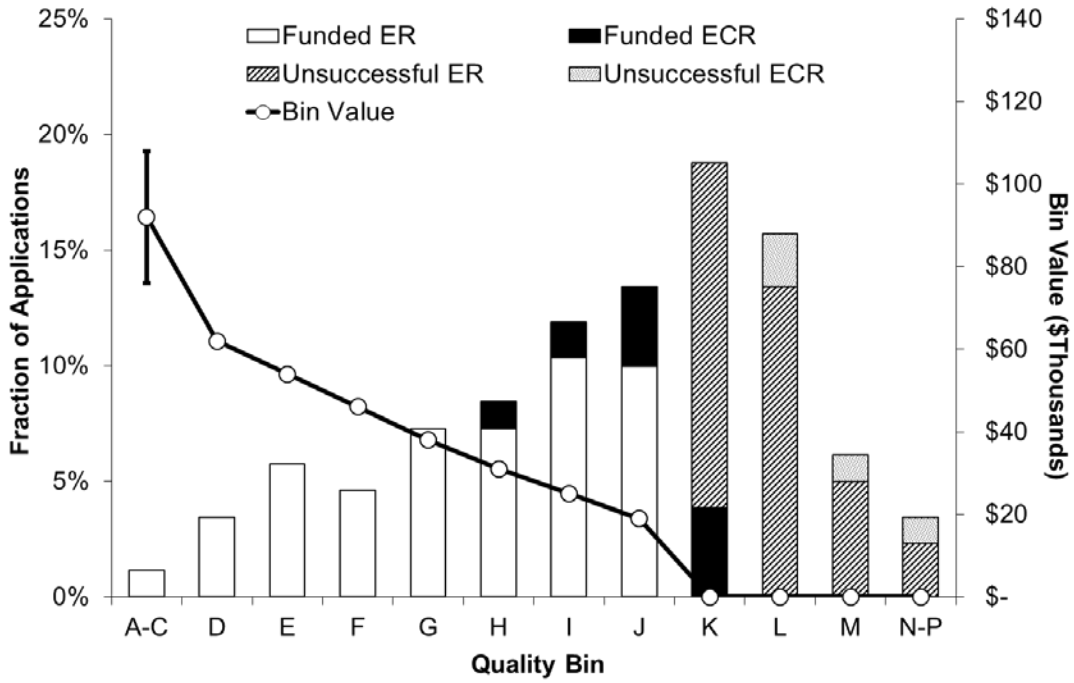
Physics* (excluding Subatomic Physics)



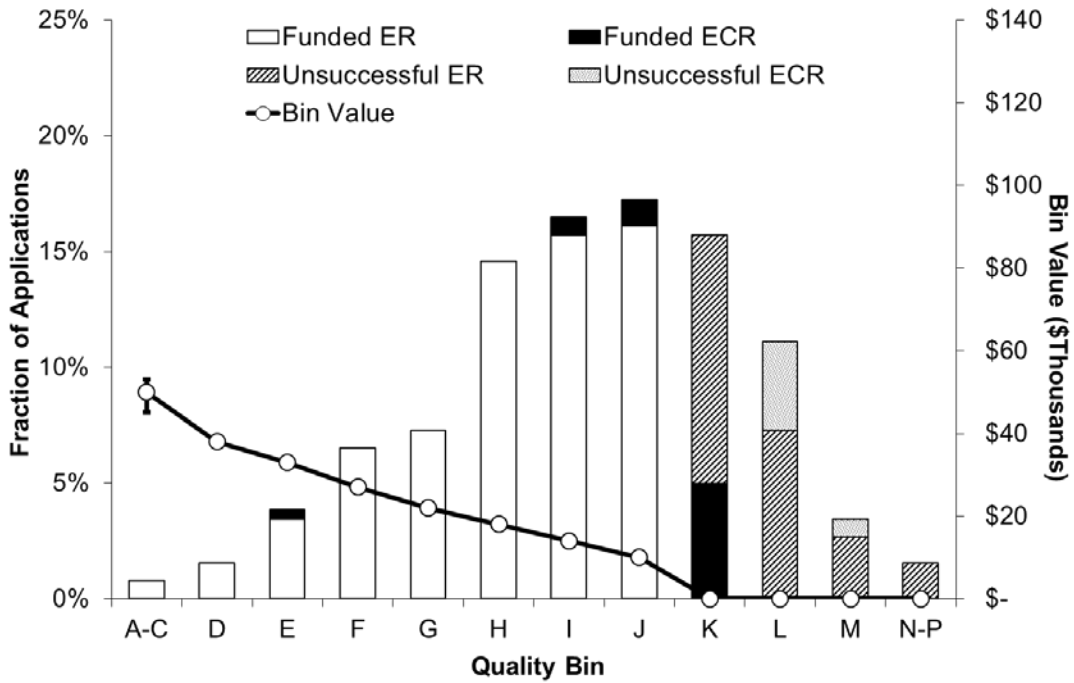
Geoscience*



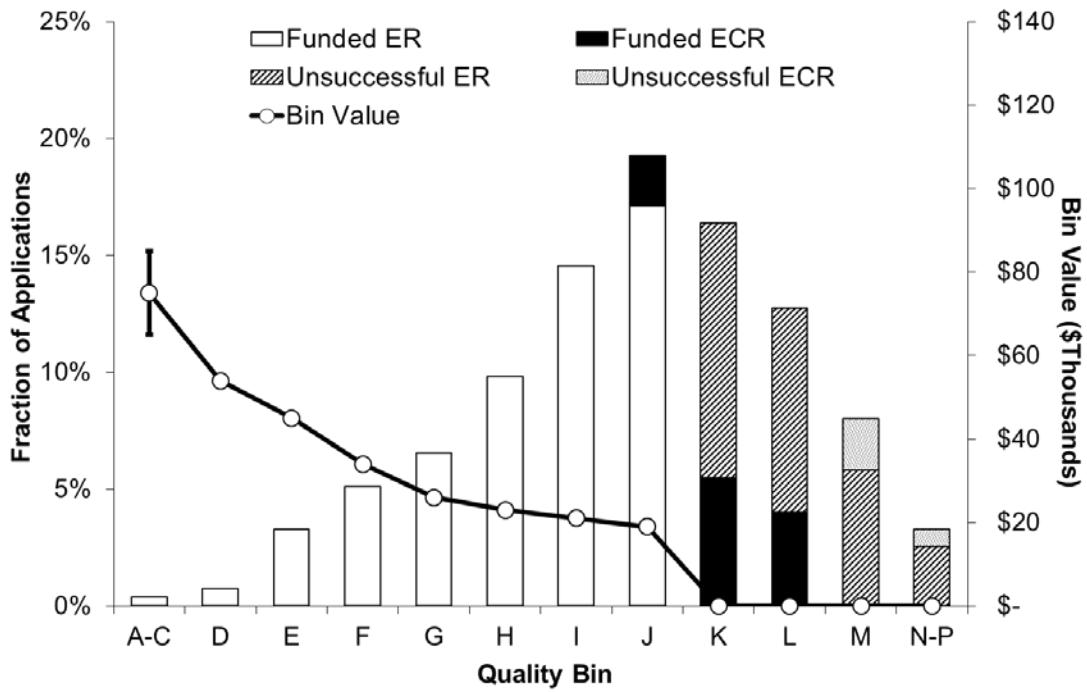
Computer Science



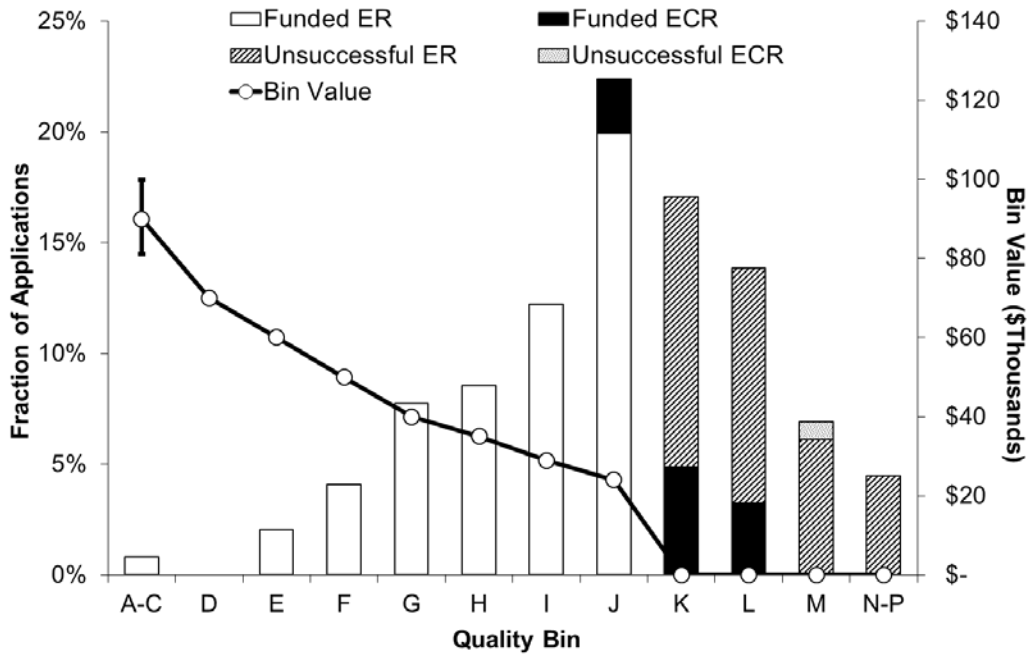
Mathematics and Statistics



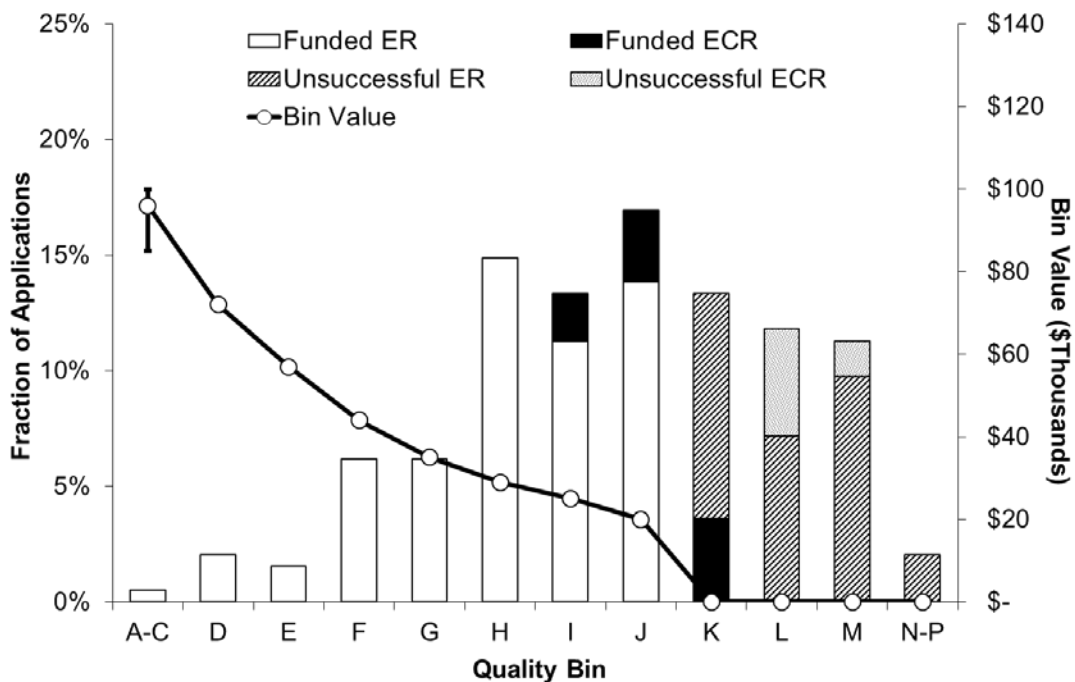
Civil, Industrial and Systems Engineering*



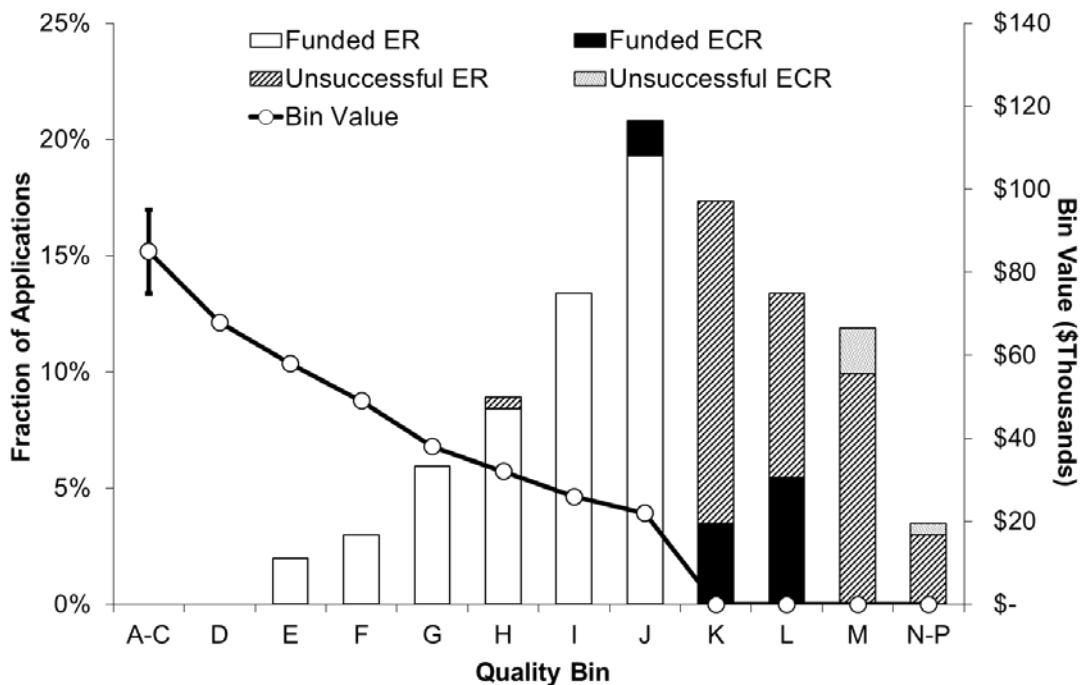
Electrical and Computer Engineering



Materials and Chemical Engineering*



Mechanical Engineering



SECTION 4 – STATISTICS BY GENDER

As part of NSERC's commitment to gender equality, processes and competitions are monitored to ensure that no potential bias affects the evaluation of any submission. Data has been pooled over four competitions to ensure sufficient numbers in each category. Regular analysis of the outcomes of the Discovery Grants competitions reveals that male and female applicants have relatively similar success rates (66 percent for males, 61 percent for females); and average grants (\$34,757 for males; \$32,634 for females). The difference in average grant is largely attributable to the career stage of applicants, with a larger proportion of female applicants who are assistant or associate professors as compared to male applicants (Table 8).

Table 8 **Proportion of Applicants by Gender and Career Stage, 2011-14 Competitions**

	Gender	
	Male	Female
Assistant Professor	22%	35%
Associate Professor	30%	33%
Professor	40%	26%
Adjunct, Emeriti & Other	9%	6%

Similar results are observed for both males and females for applicants at equivalent career stages (Figure 11) and of the same applicant status (Figure 12). Success rates vary between the disciplines (Figure 13).

Figure 11 Discovery Grant Success Rate and Average Awarded Amount by Career Stage and Gender, 2011-14 Competitions

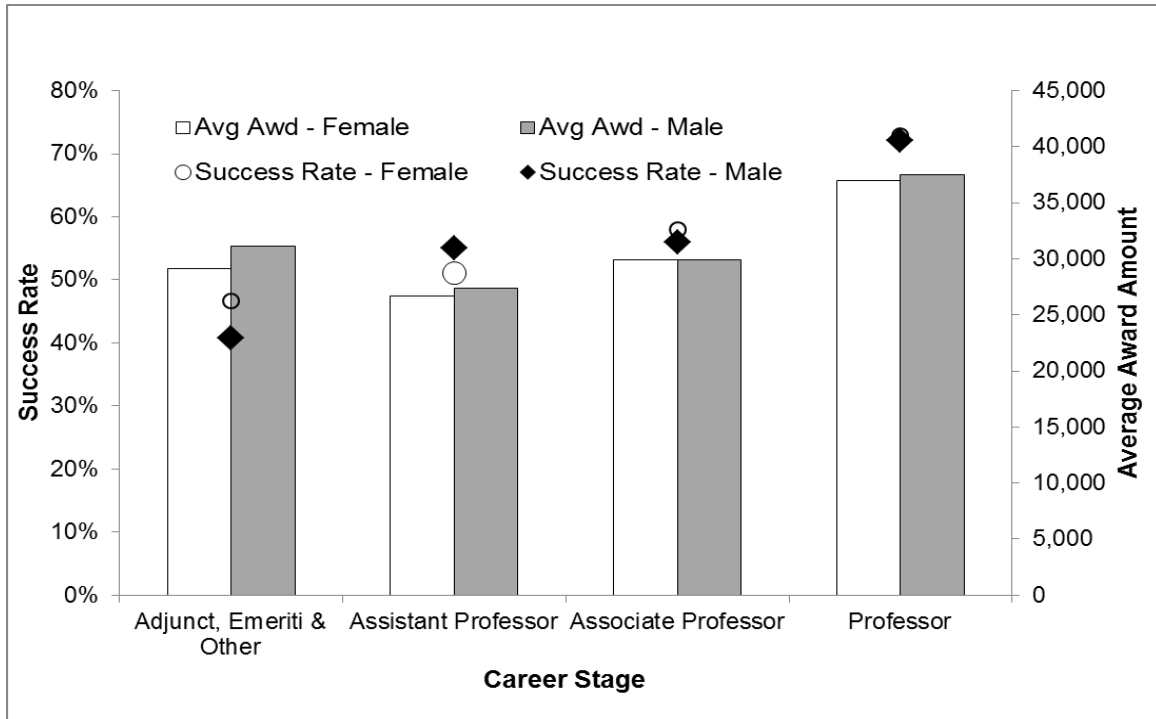


Figure 12 Discovery Grant Success Rate and Average Grant by Applicant Status and Gender, 2011-14 Competitions

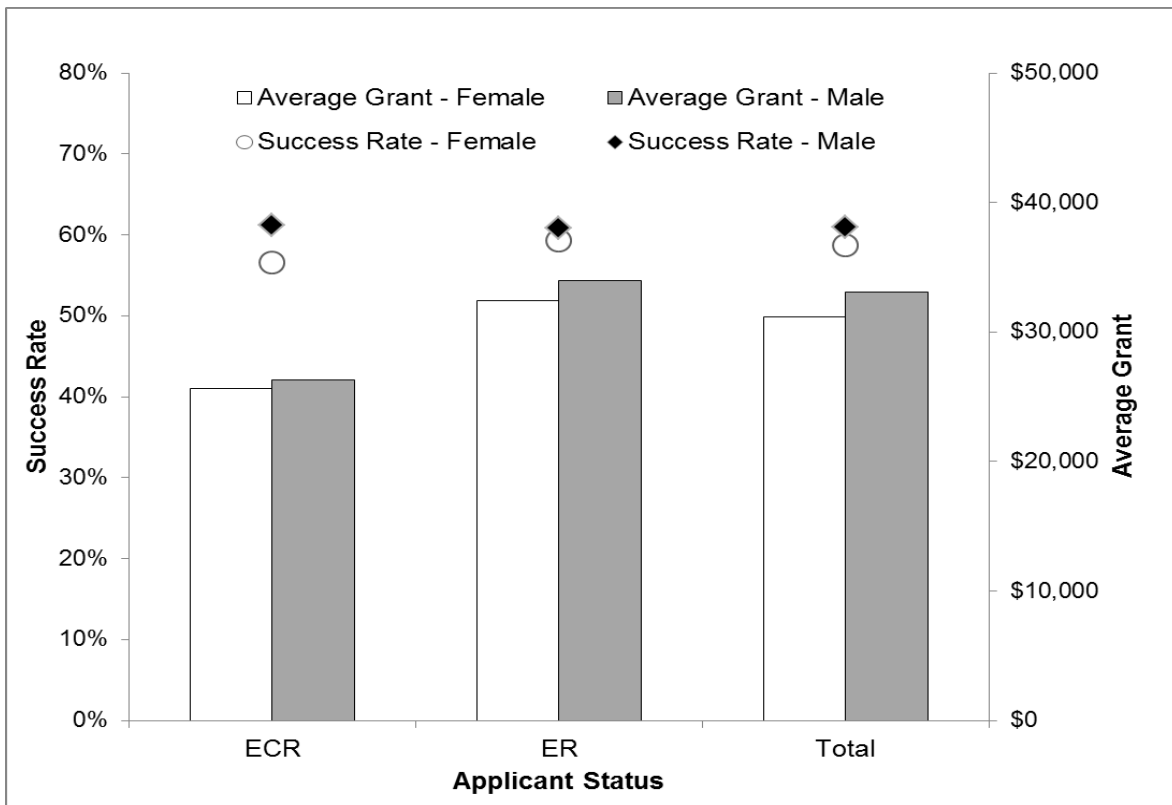
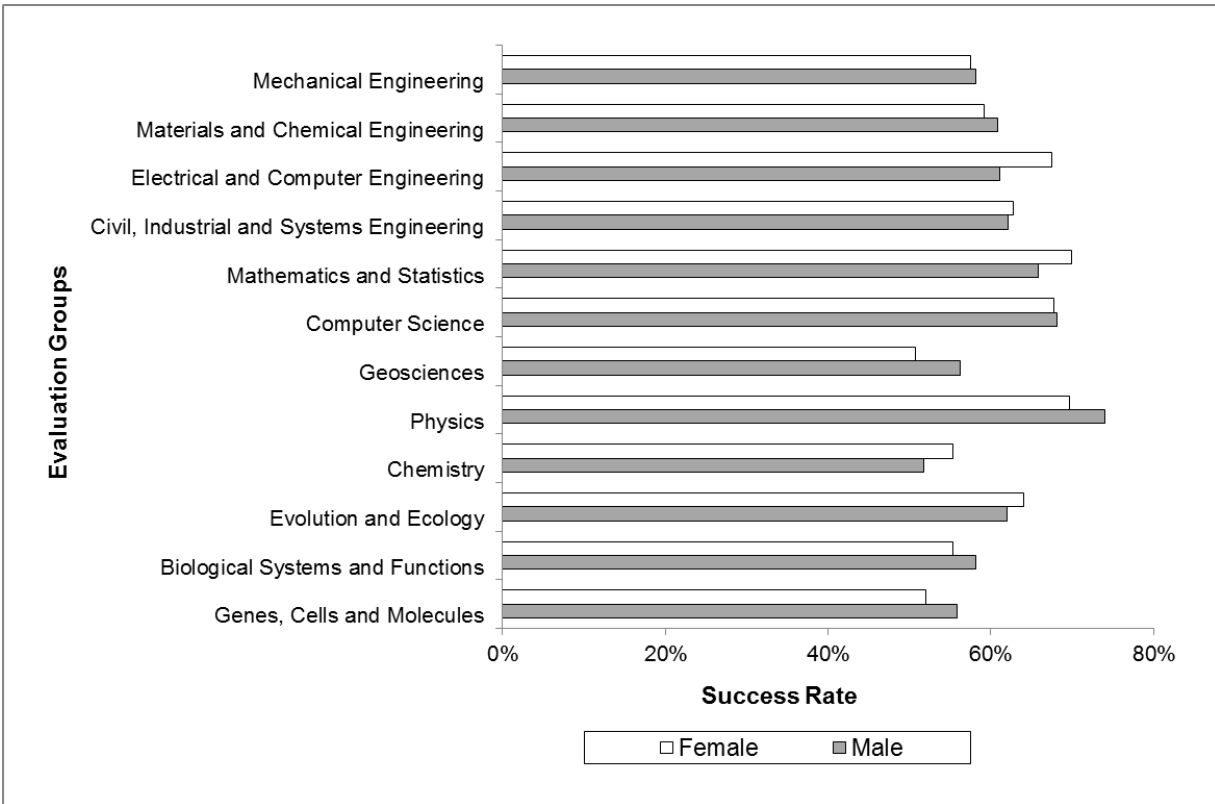


Figure 13 Discovery Grant Success Rate by Gender and Evaluation Group, 2011-14 Competitions



SECTION 5 – RESEARCH TOOLS AND INSTRUMENTS

Table 9 Overall Comparative Statistics, 2012-2014 Research Tools and Instruments Competitions

	2012	2013	2014
Requested Amount	\$125,220,062	\$101,958,582	\$51,330,842
Awarded Amount	\$24,926,407	\$24,343,810	\$17,546,570
Funding Rate	20%	24%	34%
Number of Applications	1,538	1,262	468
Number of Awarded Applications	301	295	157
Success Rate	20%	23%	34%