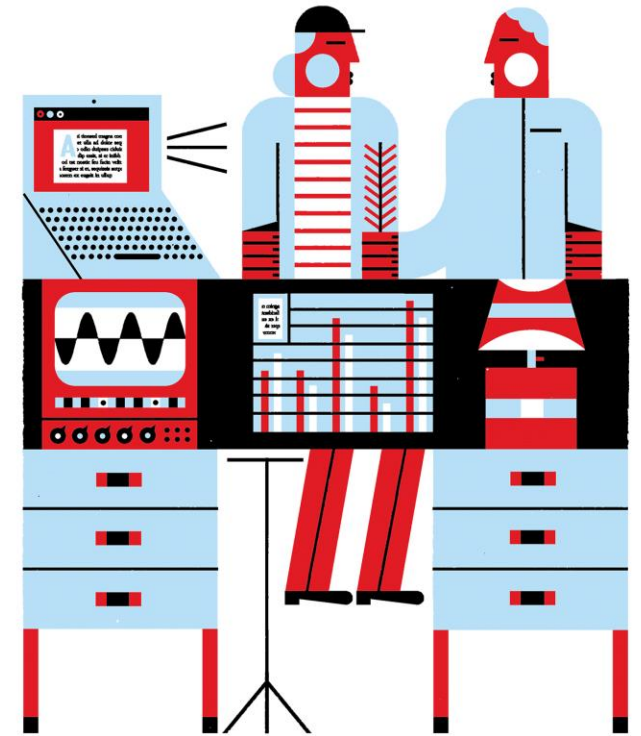




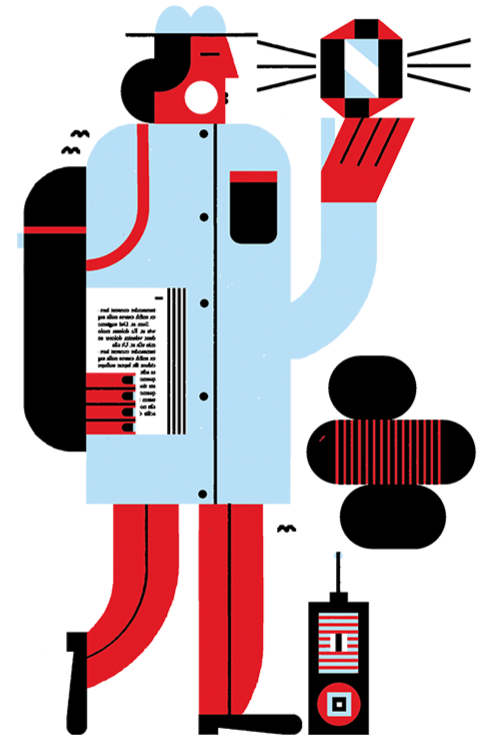
Things to know about the College and Community Innovation program

Table of contents

1. About the College and Community Innovation program
2. Institutional eligibility for CCI funding
3. CCI adapts to college needs
4. Different funding opportunities
5. How to apply for CCI funding
6. Review process
7. Application deadlines and notification of results
8. Examples of support for applied research projects
9. Useful links and contacts



1. About the College and Community Innovation program



About the College and Community Innovation program



Tri-agency

- The College and Community Innovation (CCI) program is managed by the Natural Sciences and Engineering Research Council (NSERC) in collaboration with the Canadian Institutes of Health Research (CIHR) and the Social Sciences and Humanities Research Council (SSHRC).



Federal funding

- Markedly different from the university funding environment, the CCI program is **the** federally-funded mechanism dedicated to supporting college applied research at the college level. It involves five distinct, yet complementary funding opportunities.

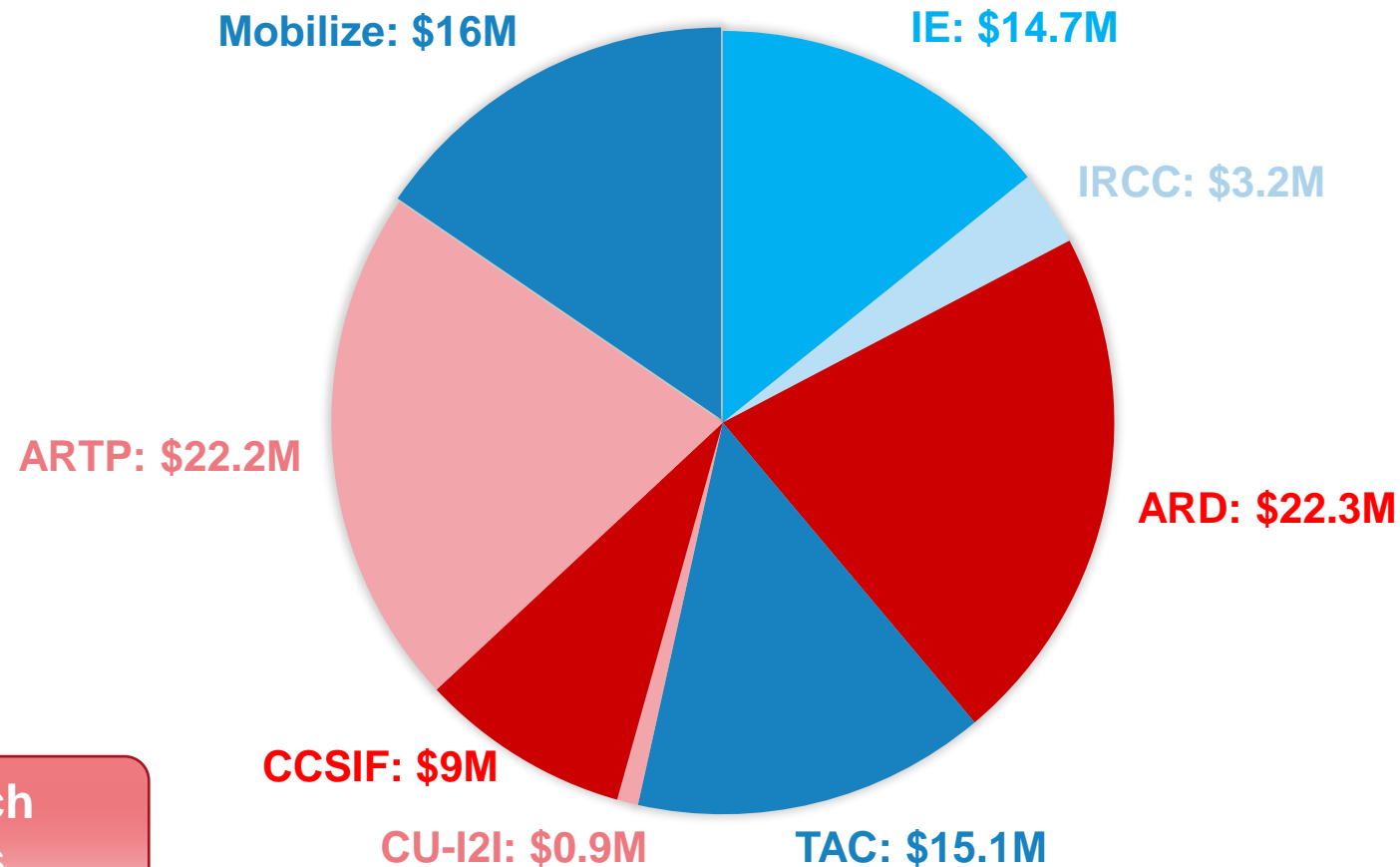
CCI program objectives

Community	Expand partner eligibility	Connectivity	Training
Address industry and community-based needs	Support research in natural sciences and engineering, health and social sciences	Strengthen connectivity between Canadian colleges, universities, businesses, and community-based partners	Produce a diverse and inclusive talent population with applied research skills and experience

Jointly
administered
by



CCI funds spent in fiscal year 2021 to 2022, by grant type: \$103 million in total



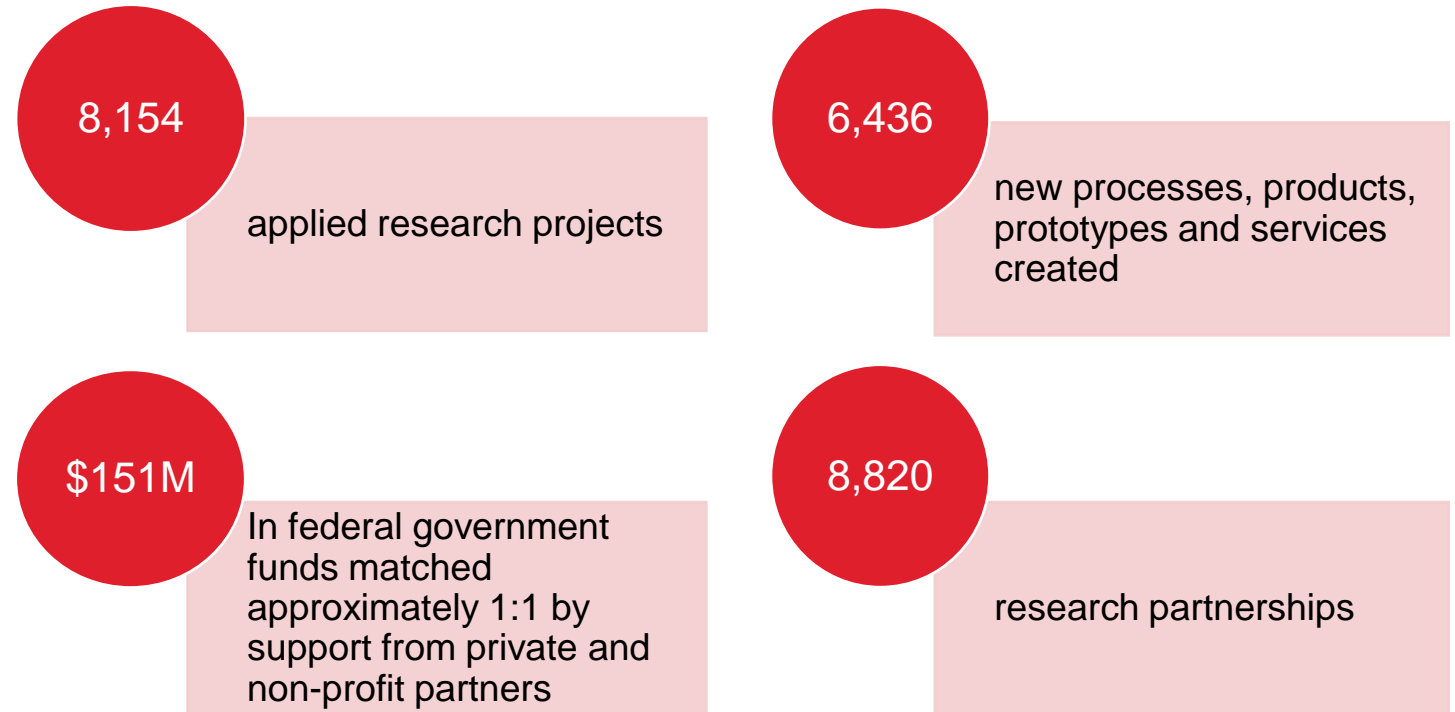
Applied Research
projects grants

Applied Research
enabling grants

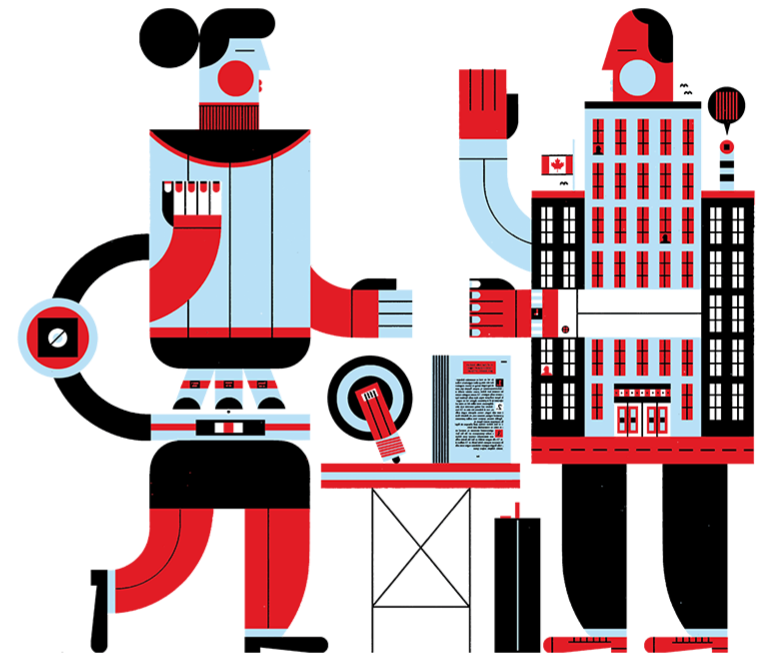
About the College and Community Innovation program

Impacts of college-level applied research

In fiscal year 2021 to 2022,
Canada's colleges helped power
the Canadian economy through:

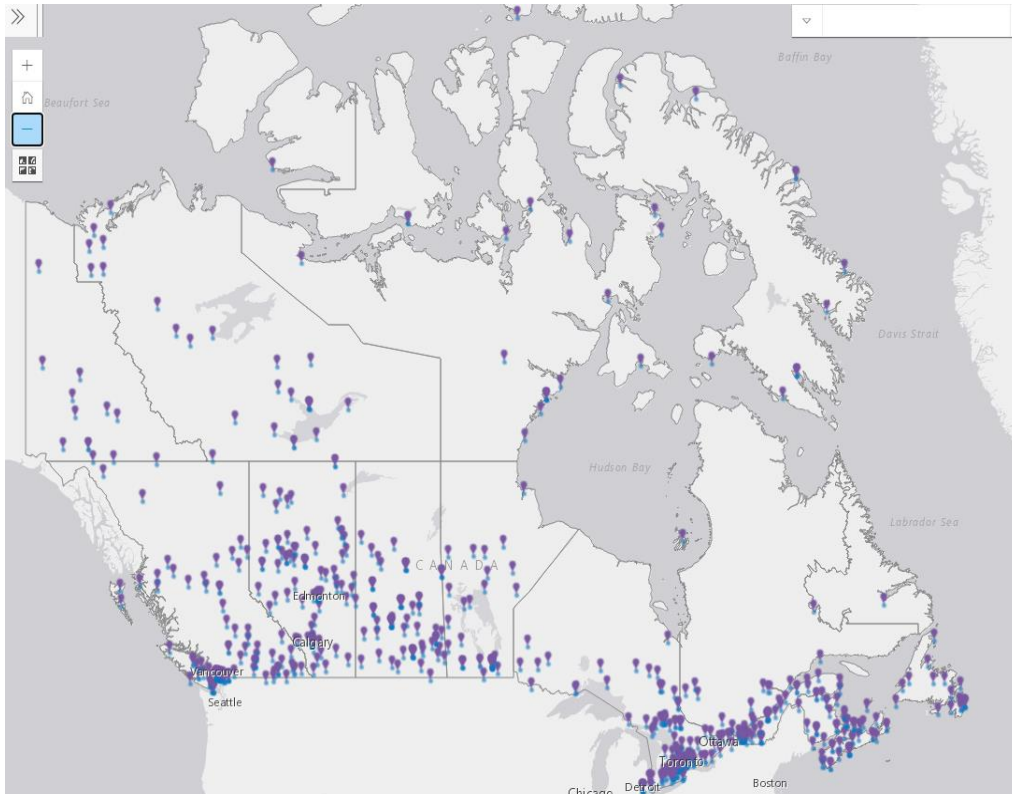


2. Institutional eligibility for CCI funding



Institutional eligibility for CCI funding

College research in Canada



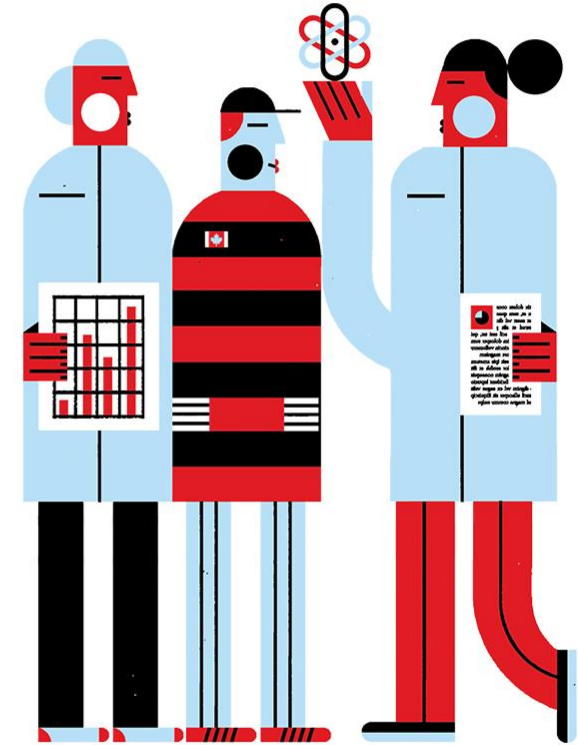
Source: [Colleges and Institutes Canada](#)

Number of CCI eligible institutions by province, as of October 2023

Alberta	13
British Columbia	15
Manitoba	4
New Brunswick	2
Newfoundland and Labrador	1
Northwest Territories	1
Nova Scotia	1
Ontario	24
Prince Edward Island	1
Quebec	54
Saskatchewan	4
Yukon	1
Total	121

Source: [NSERC – List of eligible colleges](#)

3. CCI adapts to college needs



CCI vision and key themes

Simplifying programs
and processes

Broadening
innovation and partner
types with a tri-agency
lens

Strengthening
student involvement in
applied R&D

Maximizing
connections through
partnership
opportunities among
institutions, funders
and partner
organizations

Building on
experience with EDI
Institutional Capacity
Building Grants,
Dimensions Charter,
DORA, Indigenous
research and training

Recent changes and focus areas of the CCI program

Increasing the number of eligible partners & simplifying their requirements

Adding teaching release to the new Social Sciences and Humanities Research Network on Sustainable Agriculture in a Net-Zero Economy

Creating a single cash-matching ratio for project grants

Broadened and scaled long-term, flexible funding for Mobilize grants

Considering equity diversity and inclusion

Supporting collaborations between colleges and universities

Increasing the focus on student training

Expanding definition of “student”

Modernizing applicant roles

CCI adapts to college needs

Through the CCI program, joint funding opportunities* are available to address the needs of various sectors.

There are 3 Applied Research and Development grant joint funding opportunities.

The Ontario Center of Innovation (OCI): Collaborate 2 Commercialize (C2C) program



The Mitacs accelerate internships joint funding opportunity



The Alberta Innovates' CASBE program joint funding opportunity



*As of July 2023

CCI adapts to college needs

Through the CCI program, joint funding opportunities* are available to address the needs of various sectors.

There are also 2 College and Community Social Innovation Fund grant joint funding opportunities.

*As of July 2023

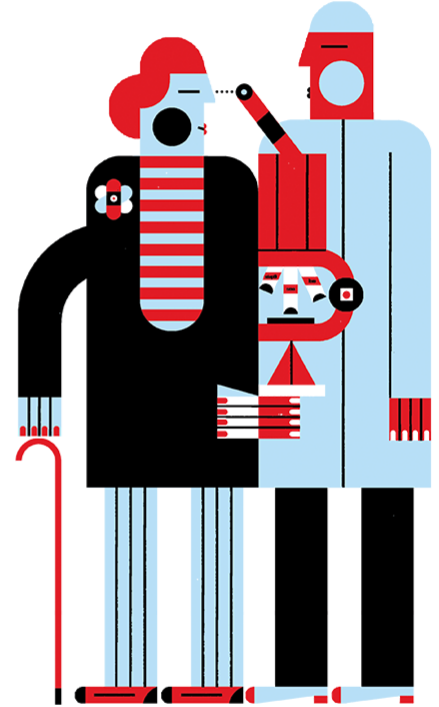
Canada Council for the Arts
grant joint Funding
opportunity



The Mitacs accelerate
internships joint funding
opportunity



4. Different funding opportunities



Different funding opportunities

CCI available grant types

Applied Research projects grants

Applied Research and Development grants (Partner-driven research)**

- Industry, health, social sciences
- Partner cash required

College and Community Social Innovation Fund grants (Society-driven research) ***

- Social sciences, health, global challenges
- Partner cash not required

**Joint research calls with the Ontario Centre for Innovation (OCI), Mitacs, Alberta Innovates, etc.

*** Joint research calls with Mitacs, Canada Council for the Arts

Applied Research enabling grants

Mobilize grants

- To develop strong and broad connections, centralize applied research resources, enable training, and show consideration for equity, diversity and inclusion.

Technology Access Centre grants

- Provide access to centres in specialized research areas that meet the innovation needs of industry and community organizations

Calls for Applied Research Tools and Instruments grants

CCI is a single program with different funding opportunities

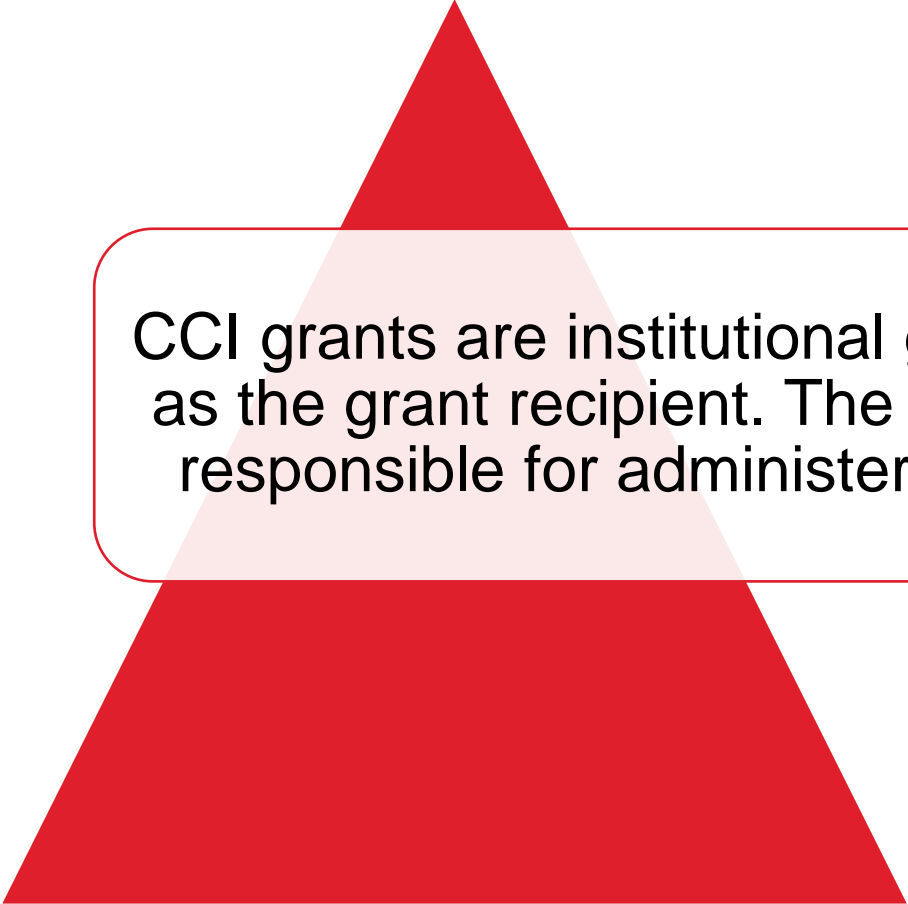
ARD	CCSIF	Mobilize	TAC	ARTI
Applied Research and Development grants	College and Community Social Innovation Fund	Mobilize grants	Technology Access Centre grants	Applied Research Tools and Instruments grants
<p>These funds support research and development projects led by college researchers in partnership with partner organizations.</p> <ul style="list-style-type: none"> • Up to \$150,000 per year • 1- to 3-year grant • Single cash-matching ratio (25%) • Open competition • Support for collaborations between multiple colleges or universities 	<p>These funds foster social innovation through partnerships with community organizations.</p> <ul style="list-style-type: none"> • Up to \$120,000 per year • In-kind contributions • Annual competition 	<p>These funds maximize student training and innovation, leading to larger benefits for partner organizations.</p> <ul style="list-style-type: none"> • 5-year grant • No “maximum requested” limit • One active grant per college • Flexible and strategic approach 	<p>These opportunities provide funding for the core operations of TACs. The centres then provide timely innovation support to a college’s community organizations (from the private, public, health or not-for-profit sectors).</p> <ul style="list-style-type: none"> • Annual competition • 5-year renewable grants • \$350,000 per year (\$100,000 for TACs in Quebec) • Up to 3 active TACs per college • Community, local or regional focus 	<p>These funds support the purchase of applied research equipment allowing colleges to better respond to the innovation needs of their partners and to provide hands-on training opportunities for their students.</p> <ul style="list-style-type: none"> • 1-year grant • \$10,000 to \$200,000 • Enhances the capacity of college applied research programs

5. How to apply for CCI funding



How to apply for CCI funding

What are institutional grants?



CCI grants are institutional grants, meaning the institution is identified as the grant recipient. The applicant prepares the application, and is responsible for administering the grant, on behalf of the institution.

How to apply for CCI funding

Roles in the application process*

Applicant must:

- hold a remunerated position at an eligible Canadian college
- be responsible for administering grant funds on behalf of the college
- be distinct from the college's research grants officer

Research Grants Officer (RGO) must:

- be the designated institutional liaison officer
- Be responsible for approving and submitting the grant application on behalf of the college

*Refer to the application instructions for a specific funding opportunity to see all involved roles

How to apply for CCI funding

Submitting a grant application

- Grant applications are submitted using the [Convergence portal](#).
- Both the applicant and the research grants officer (RGO) must create accounts in the portal in order to prepare (applicant) and approve and submit (RGO) the application to NSERC.

Government of Canada / Gouvernement du Canada

Convergence Portal

Home | Have questions? | Login

Portal Account Users

The Convergence Portal is intended for use by individuals participating in funding programs from the Natural Sciences and Engineering Research Council (NSERC), the Social Sciences and Humanities Research Council (SSHRC) and programs administered by the Tri-agency Institutional Programs Secretariat (TIPS), on behalf of the three research granting agencies: the Canadian Institutes of Health Research (CIHR), NSERC and SSHRC.

Before using the Convergence Portal, you must read the [Terms and conditions](#) and [Transparency](#). When you sign in and use this system, it means that you understand these policies and conditions and that you consent to the use of your personal information for administrative purposes.

Note: If you currently have an **account on the Research Portal**, please use your existing credentials.

Login

Email

Password (required)

[Forgot password?](#)

☐ Remember me?

Login

New to the Convergence Portal?

[Create My Portal Account](#)

Source: [Convergence portal](#)

How to apply for CCI funding

Submission process details for applicants and RGOs

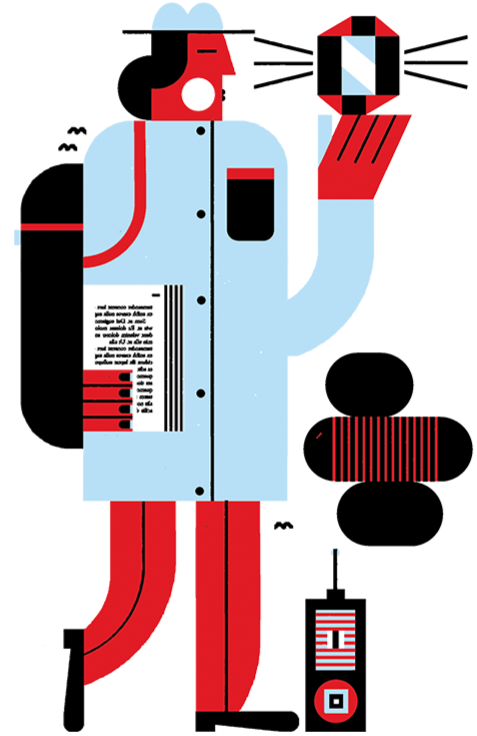
Applicants need to:

- create and complete the application in the Convergence portal
 - ensure the “My information” section contains CV details and the CCI CV Contributions document
- submit the application to the RGO
- invite co-applicants, participants, collaborators and contributors (if applicable) to access the application via the Convergence portal
 - see individual grants’ application instructions for more details.

Research Grants Officers (RGO) need to:

- click the “Research Administrator” button (in the Convergence portal) to see applicant submissions
 - “Research Administrator” button located at the top of the webpage in the blue bar
- approve and submit the grant application on behalf of the college in the Convergence portal

6. Review process



Review process

Applied research project grants

Applied Research and Development grants

Internal evaluation for applications requesting an average yearly amount of \$40,000 and less (small Applied Research and Development grants):

- Scores assigned and funding recommendation made by internal staff

External review for applications requesting an average yearly amount above \$40,000 and up to \$150,000 (large Applied Research and Development grants):

- External reviewers provide their assessment and scores for each sub-criterion
- Internal staff use external comments and scores to score each criterion and make a funding recommendation
- The most meritorious applications are selected for funding

Notices of decision (and external review assessment forms for large Applied Research and Development grants) are available in Convergence.

Review process

Applied research project grants

College and Community Social Innovation Fund grants

Multidisciplinary review committee

- Representation from colleges, universities, not-for-profit organizations, public and private sectors
- Each application assigned to 3 members for review
- Applications scored
- Subset of applications discussed at the virtual review meeting
- Final rankings determined
- Funding decisions made based on applications' level of merit (rank) and availability of funds.

Notices of decision are available in the Convergence portal. Reviewers' comments only provided for those applications that aren't recommended for funding.

Review process

Applied research enabling grants

Mobilize grants

Multidisciplinary review committee

- Broad range of expertise represented
 - Various sectors (academic, industry, government, not-for-profit)
 - All regions of Canada
 - English, French and bilingual
- Each application assigned to 3 members for review
- Assigned applications discussed at review meeting
 - Consensus reached on a score for each criterion
 - Average score of the application calculated
- Final rankings determined based on assigned scores
- Funding decision (including level of funding) made will depend on its level of merit (the rating of the four selection criteria, weighted equally) and available funds.

Notices of decision, as well as comments from reviewers are available in the Convergence portal.

Review process

Applied research enabling grants

Technology Access Centre grants

2-stage competition

Letter of Intent (LOI) stage:

- Multidisciplinary committee reviews each application (5 reviewers assigned per application)
- Scores are submitted through the Convergence portal and discussed during committee meeting
- CCI staff create message from review committee and rank letters according to scores
- Number of letters invited to the next stage depend on available funds

Review process

Applied research enabling grants

Technology Access Centre grants (continued)

2 stage competition

Full application stage with 2 multidisciplinary review committees

Two multidisciplinary review committees	
Fully funded grants (\$350,000)	Incremental grants (\$100,000)
<ul style="list-style-type: none"> Applications reviewed during a review committee meeting which includes virtual presentations and interviews of the colleges' representatives by a group of 5 committee members Scores then discussed in a separate committee meeting Applications ranked (2 ranking lists are used, 1 for renewals and 1 for new TACs) Final funding recommendation made to CCI staff 	<ul style="list-style-type: none"> Each application reviewed by a group of 5 committee members Final ranking discussion provides funding recommendation to CCI staff

CCI staff take notes from both committees. Reviewers comments are reviewed by the first reader from each group of five committee members. Then the comments are communicated with applicants through the Convergence portal along with the funding decision.

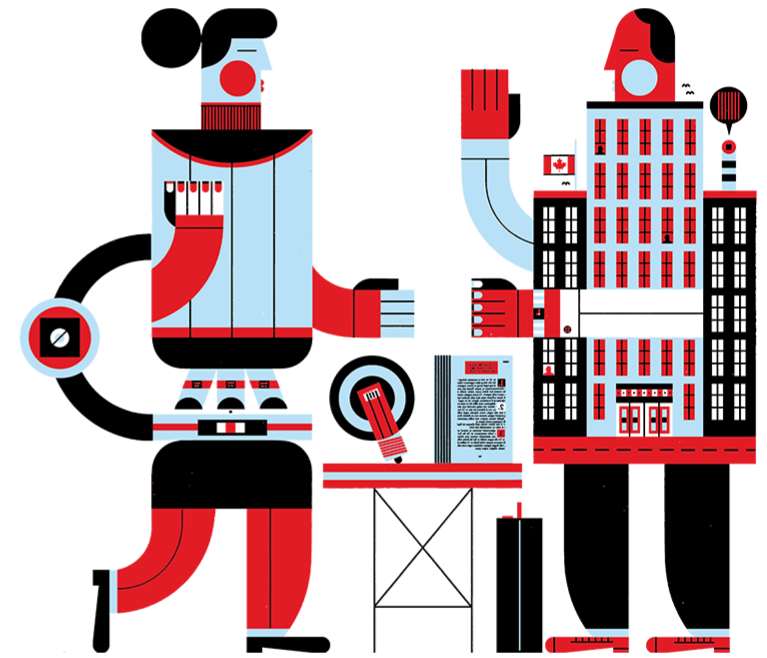
Review process

Applied research enabling grants

Applied Research Tools and Instruments grants

- These grant applications are assigned to a multidisciplinary review committee, which conducts a merit assessment of each application and makes a funding recommendation.
- Additional information will be provided as it becomes available.

7. Application deadlines and notification of results



Application deadlines and notification of results

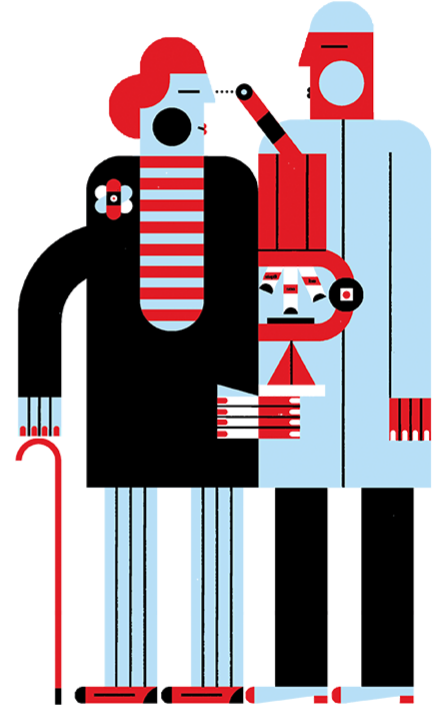
Timelines

College and Community Innovation program		
Title	Deadline dates	Notification of decision**
Applied Research and Development (ARD)_grants	Application: No deadline	5 to 9 weeks (\$40,000 or less per year)
		24 to 28 weeks (\$40,001 to \$150,000 per year)
Applied Research Tools and Instruments (ARTI)_grants	Application: January 16, 2024	16 weeks
College and Community Social Innovation Fund (CCSIF)	Application: March 1, 2023	20 weeks
Mobilize grants	Application: April 27, 2023	16 weeks
Technology Access Centres (TAC)_grants	Letter of intent: September 6, 2023	12 weeks
	New applications and renewals: January 24, 2024, by invitation only	12 weeks

*Screenshot as of October 2023

For timelines, refer to [NSERC – Application deadlines and notification of decision](#)

8. Examples of support for applied research projects



Examples of support for enabling applied research

Technology Access Centre (TAC) grants

Lambton Manufacturing Innovation Centre

- The Bluewater Technology Access Centre, known as Lambton Manufacturing Innovation Centre (LMIC) at Lambton college, is an advanced manufacturing centre responding to innovation gaps and local and regional diversification efforts by providing applied research and development to small-and-medium-sized enterprises. LMIC is an innovation hub for regional advanced manufacturing with enhanced capabilities in additive printing and product/process/materials development. LMIC also provides offerings to address the significant industry training needs of the regional and provincial manufacturing industry. Since its inception in 2013, LMIC has had over 5000 research engagements over 200 research partners, over \$14 million research grant revenue and over \$2.5 million partner cash contribution.
- Read more about the [Lambton Manufacturing Innovation Centre](#).

Mobilize

Building Rural Resilience: Climate Action, Technology and Innovation at Selkirk college

- Selkirk College, receiving a \$1 million Mobilize grant to advance rural resilience in the Kootenay region of British Columbia, is working to address issues from climate action to technology and social innovation and offer a quality work-integrated learning experience for students. Mobilize grant funds will ensure that emerging themes in health, reconciliation, and inclusion continue to mature to address Selkirk's most pressing community and industry partner innovation challenges. The funds will help Selkirk College continue to train a diverse pool of students, maintaining a talent pipeline directly to meet workforce demands directly.
- [Read more about the project](#).

Examples of support for applied research projects

Applied Research and Development (ARD) grants

Development of high-performance nanostructured materials for the Technologies_Ecofixe™ wastewater- treatment system

- Collège Montmorency, in partnership with Technologies Ecofixe Inc., has undertaken a 2-year research project funded by an Applied Research and Development grant from the Natural Sciences and Engineering Research Council (NSERC) CCI program.
- The objective of this project is to synthesize nanostructured ceramic-polymer composites to optimize the performance of the Technologies Ecofixe modular system. This system is used to address insufficient capacity in the treatment of aerated wastewater ponds. From a circular economy and sustainable development standpoint, this project will also help to valorize various industrial wastes, such as plastic and glass, and to promote a new generation of biosourced materials recovered from food waste.
- NSERC has awarded a total of \$150,000 for this project, while Technologies Ecofixe will be investing \$37,500 in cash and \$50,336 in kind, bringing the total value of the project to \$237,836.
- [Read more about the project](#) (French only).

College and Community Social Innovation Fund (CCSIF) grants

The dynamics of COVID-19 vaccine hesitancy in the Yukon: attitudes and beliefs of first nation communities

- Yukon University and the Council of Yukon First Nations received a \$360,000 CCSIF grant to examine the dynamics of COVID-19 vaccine hesitancy in the Yukon. This project, conducted in partnership with Yukon First Nations and upholding principles of Indigenous Data Sovereignty and OCAP, will allow researchers to delve deeper into the attitudes and opinions of Yukon First Nations with varying experiences of vaccine uptake. The research will lead to better understanding of community factors influencing vaccine hesitancy and will contribute to the development of effective and context-specific vaccine outreach programs.
- [Read more about the project](#).

9. Useful links and contacts



Useful links and contacts

Useful links

1.

[List of eligible colleges](#)

2.

[CCI funding opportunities](#)

3.

[Application deadlines and notification of results timeline](#)

4.

[CCI Resources](#)

5.

[Upcoming events](#)

6.

[Instructional videos](#)

Useful links and contacts

Contacts

Questions?

College and Community Innovation (CCI) program

colleges@nserc-crsng.gc.ca

Connect with the granting agencies

NSERC



[@NSERC_CRSG](https://twitter.com/NSERC_CRSG)



[Natural Sciences and Engineering Research Council of Canada](#)



[Natural Sciences and Engineering Research Council of Canada \(NSERC\)](#)

SSHRC



[@SSHRC_CRSH](https://twitter.com/SSHRC_CRSH)



[Social Sciences and Humanities Research Council of Canada \(SSHRC\)](#)



[SSHRC-CRSH](#)

CIHR



[@CIHR_IRSC](https://twitter.com/CIHR_IRSC)



[Canadian Institutes of Health Research](#)



[Canadian Institutes of Health Research](#)